



ASKING PRICE

£82,500



THE DETAILS



8 Lyndley Court

Douglas

£82,500

call in today or visit www.blackgracecowley.com for more details

e: info@blackgracecowley.com | w: blackgracecowley.com | t: +44 (0) 1624 645 555

a: 51 Victoria Street, DOUGLAS, Isle of Man, IM1 2LD



PROPERTY DETAILS FOR
8 Lyndley Court, Douglas

THE DESCRIPTION

- First floor converted apartment
- Convenient position close to town centre
- Lounge, Kitchen, Bedroom with En Suite Shower Room
- Gas fired central heating and double glazing

THE PROPERTY

DIRECTIONS

Leave Douglas centre via Bucks Road before reaching the Rosemount traffic lights turn left into Kensington Road, right into Kensington Avenue and then right again onto Rosemount where the property is along on the right hand side identified by our "For Sale" board.

HALL

Built-in cupboard.

LOUNGE (APPROX 15'3 X 11'0)

Front and side windows.

KITCHEN (APPROX 10'3 X 7'4)

Fitted with white base, wall and drawer units with matching work surfaces. Electric oven, hob and filter hood. Plumbed for automatic washing machine. Vaillant gas fired central heating/hot water combination boiler.

BEDROOM (APPROX 13'9 X 12'2)

EN SUITE SHOWER ROOM

Fitted with a white suite comprising shower cubicle and plumbed in shower, wash hand basin and toilet.

SERVICES

All main services are installed.

e: info@blackgracecowley.com | w: blackgracecowley.com | t: +44 (0) 1624 645 555

a: 51 Victoria Street, DOUGLAS, Isle of Man, IM1 2LD



PROPERTY DETAILS FOR
8 Lyndley Court, Douglas

TENURE

The Tenure is Leasehold.

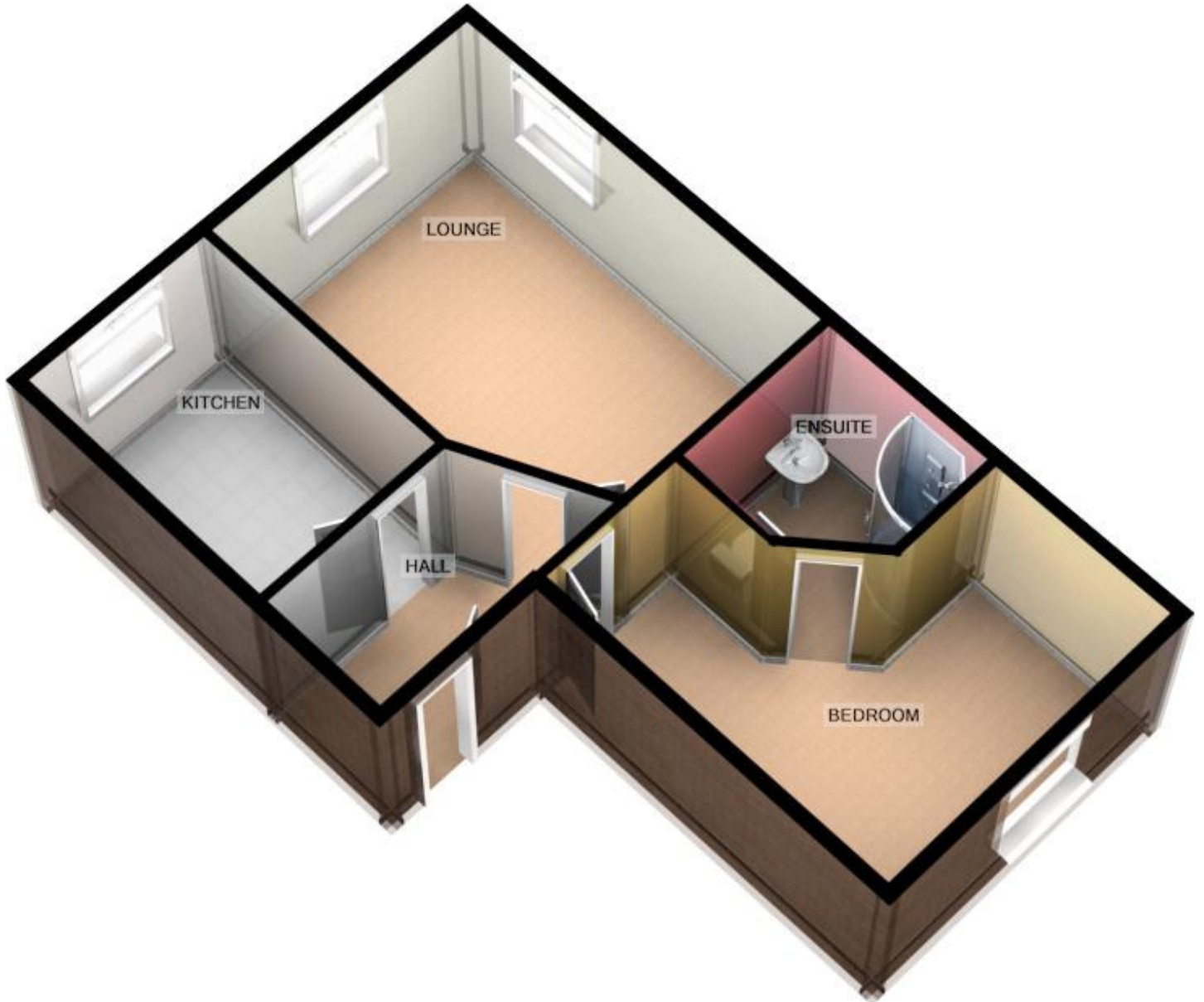
POSSESSION

Vacant possession on completion of purchase.

VIEWINGS

By appointment through the Agent, Black Grace Cowley.

FLOORPLAN



For illustrative purposes only. Decorative finishes, fixtures, fittings and furnishings do not represent the current state of the property. Measurements are approximate. Not to scale
Made with Metropix ©2017