



ASKING PRICE

£159,950

THE DETAILS



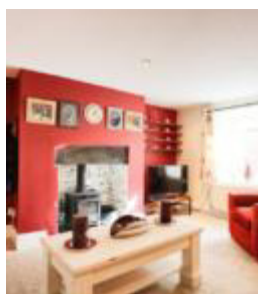
2



1



1



21 Christian Street

Isle of Man

£159,950

call in today or visit www.blackgracecowley.com for more details

e: peel@blackgracecowley.com | w: blackgracecowley.com | t: +44 (0) 1624 845 696

a: 9 Atholl Place, PEEL, Isle of Man, IM5 1HE

PROPERTY DETAILS FOR
21 Christian Street, Peel, IM5 1NW



PROPERTY DETAILS FOR
21 Christian Street, Peel, IM5 1NW





PROPERTY DETAILS FOR

21 Christian Street, Peel, IM5 1NW

THE DESCRIPTION

A well presented quaint Cottage situated in the heart of Peel within walking distance of shops and amenities. The accommodation double glazed and served by oil fired central heating comprises Lounge, Breakfast Kitchen, Conservatory, Two bedrooms, Attic room and Bathroom. To the rear is an attractive private paved yard.

THE PROPERTY

DIRECTIONS

From our Peel office follow the road up Christian Street where the property will be found a short distance along on the left hand side easily identified by our For Sale sign.

ACCOMMODATION

LOUNGE (*APPROX 15'6 X 12'7*)

Multi-fuel burner set in a Manx stone recess with slate hearth. Built in storage under the stairs. Open stairs leading to first floor.

BREAKFAST KITCHEN (*APPROX 12'2 X 8'85*)

Fitted with a range of beech fronted wall and base units incorporating a stainless steel sink unit with mixer tap, electric oven and hob. Space for fridge and freezer. Plumbed for washing machine and dishwasher. Laminate flooring. Opening to:

CONSERVATORY (*APPROX 13'07 X 8'27*)

Door to rear paved yard.

CLOAKROOM

Fitted with a white suite of WC and wash hand basin.

FIRST FLOOR

e: peel@blackgracecowley.com | w: blackgracecowley.com | t: +44 (0) 1624 845 696

a: 9 Atholl Place, PEEL, Isle of Man, IM5 1HE



PROPERTY DETAILS FOR

21 Christian Street, Peel, IM5 1NW

BEDROOM 1 (APPROX 12'53 X 11'46)

Built in wardrobes. Overstairs storage.

BEDROOM 2 (APPROX 8'78 X 8'81)

White suite comprising wash hand basin and WC. Fully tiled with electric shower. Extractor Fan.

ATTIC BEDROOM (APPROX 13'15 X 12'56)

Velux window. Under eaves storage.

OUTSIDE

Rear patio area with rear wall surround. Oil tank. Rear access gate.

SERVICES

All main services are installed. Oil fired central heating.

TENURE

Freehold.

POSSESSION

Vacant possession on completion of purchase.

VIEWINGS

By appointment through the agent Black Grace Cowley.

e: peel@blackgracecowley.com | **w:** blackgracecowley.com | **t:** +44 (0) 1624 845 696

a: 9 Atholl Place, PEEL, Isle of Man, IM5 1HE

FLOORPLAN



For illustrative purposes only. Decorative finishes, fixtures, fittings and furnishings do not represent the current state of the property. Measurements are approximate. Not to scale.
Made with Metropix ©2018