



ASKING PRICE

£99,950

THE DETAILS



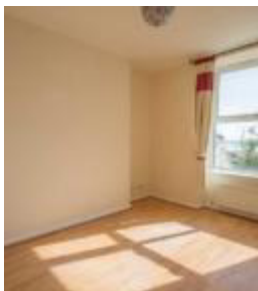
1



1



1



Apartment 4, Angel Court
4 Derby Terrace, Douglas
£99,950

call in today or visit www.blackgracecowley.com for more details

e: hello@blackgracecowley.com | w: blackgracecowley.com | t: +44 (0) 1624 645 555

a: 51 Victoria Street, DOUGLAS, Isle of Man, IM1 2LD

Apartment 4, Angel Court, 4 Derby Terrace, Douglas





PROPERTY DETAILS FOR

Apartment 4, Angel Court, 4 Derby Terrace, Douglas

THE DESCRIPTION

- Easily managed upper ground floor promenade apartment
- Ideally located for town centre living and working
- Comprises Hall, Lounge, Kitchen, Bedroom and Bathroom
- Gas central heating and uPVC double glazing
- No onward chain

THE PROPERTY

DIRECTIONS

Leave Douglas centre via The Promenade and continue along where Angel Court is on the left hand side shortly before the Empress Hotel. The property is identified by our For Sale Board.

HALL

Entry phone. Laminate wood floor covering.

LOUNGE (APPROX 13'10 X 10'6)

Laminate wood floor covering. Sea view.

KITCHEN (APPROX 9'0 X 5'6)

Pine base, wall and drawer units. Worksurface. Single drainer sink unit. Electric oven and hob. Filter hood. Plumbing for automatic washing machine. Central heating boiler.

BEDROOM (APPROX 14'10 X 9'0)

Fitted wardrobes and cupboards. Laminate wood floor covering.

BATHROOM (APPROX 9'9 X 5'3)

White suite comprising bath with shower mixer lead over, wash hand basin and toilet. Laminate wood floor covering. Part tiled walls.

SERVICES

All mains services are installed.

e: hello@blackgracecowley.com | **w:** blackgracecowley.com | **t:** +44 (0) 1624 645 555

a: 51 Victoria Street, DOUGLAS, Isle of Man, IM1 2LD



PROPERTY DETAILS FOR

Apartment 4, Angel Court, 4 Derby Terrace, Douglas

TENURE

The Tenure is Leasehold.

MANAGEMENT CHARGES

Approx. £600 per annum.

POSSESSION

Vacant possession on completion of purchase.

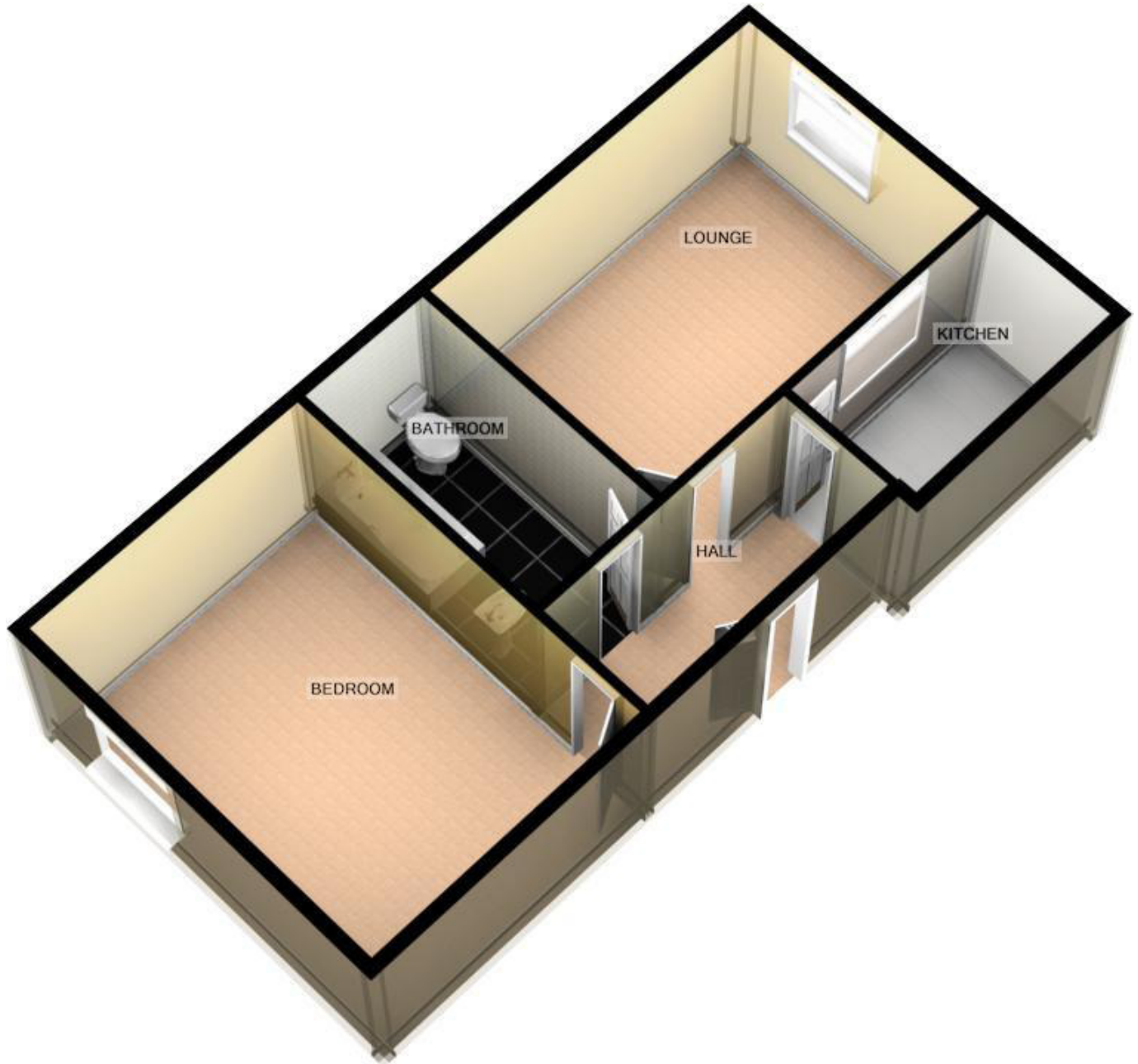
VIEWINGS

By appointment through the Agent, Black Grace Cowley.

e: hello@blackgracecowley.com | **w:** blackgracecowley.com | **t:** +44 (0) 1624 645 555

a: 51 Victoria Street, DOUGLAS, Isle of Man, IM1 2LD

FLOORPLAN



For illustrative purposes only. Decorative finishes, fixtures, fittings and furnishings do not represent the current state of the property. Measurements are approximate. Not to scale
Made with Metropix ©2018