



ASKING PRICE

£259,950

THE DETAILS



3



1



1



30 Groudle Road

Onchan

£259,950

call in today or visit www.blackgracecowley.com for more details

e: hello@blackgracecowley.com | w: blackgracecowley.com | t: +44 (0) 1624 645 555

a: 51 Victoria Street, DOUGLAS, Isle of Man, IM1 2LD

PROPERTY DETAILS FOR
30 Groudle Road, Onchan





PROPERTY DETAILS FOR 30 Groudle Road, Onchan

THE DESCRIPTION

- Detached split-level house
- Sought after position with rear views to Snaefell
- Needs modernising and improvements
- Hall, Lounge/Dining Room, Kitchen, Bedroom and Bathroom on ground floor
- 2 further Bedrooms on the lower ground floor
- Mature front and rear gardens
- Driveway parking and Double Garage
- Oil fired central heating, double glazing
- No onward chain

THE PROPERTY

DIRECTIONS

Leave Douglas via the promenade and continue out onto King Edward Road before turning left onto Harbour Road. Continue to the top of the road bear right onto Groudle Road and the property is further along, clearly identified by our For Sale board.

ACCOMMODATION

PORCH

Sliding patio style entrance door. Tiled floor.

HALL

Cloaks and storage cupboards. Loft access. Stairs to lower ground floor. Door to the garage.

LOUNGE/DINING ROOM (*APPROX 17'4 X 12'2*)

View towards Snaefell.

KITCHEN (*APPROX 11'0 X 11'0*)

Dated units and in need of re-fitting. Electric cooker point. Plumbing for automatic washing machine. Cylinder cupboard.

BEDROOM (*APPROX 12'0 X 12'0*)

Built-in wardrobe.

e: hello@blackgracecowley.com | **w:** blackgracecowley.com | **t:** +44 (0) 1624 645 555

a: 51 Victoria Street, DOUGLAS, Isle of Man, IM1 2LD



PROPERTY DETAILS FOR
30 Groudle Road, Onchan

BATHROOM (APPROX 7'5 X 6'5)

White suite comprising bath with shower mixer lead over, wash hand basin and toilet. Tiled walls.

LOWER GROUND FLOOR

HALL

Door leading to the garden.

BEDROOM (APPROX 17'7 X 12'0)

Built-in cupboard. View towards Snaefell.

BEDROOM (APPROX 12'0 X 12'0)

View towards Snaefell.

OUTSIDE

Mature gardens to the front and rear. Block paved driveway with generous off road parking, leading to the garage. Private mature rear garden with high privet boundary hedge and access to under-house storage.

GARAGE (APPROX 18'6 X 16'0)

Attached integral double garage.

SERVICES

Mains water, electricity and drainage are installed. Oil fired central heating.

TENURE

Freehold.



PROPERTY DETAILS FOR
30 Groudle Road, Onchan

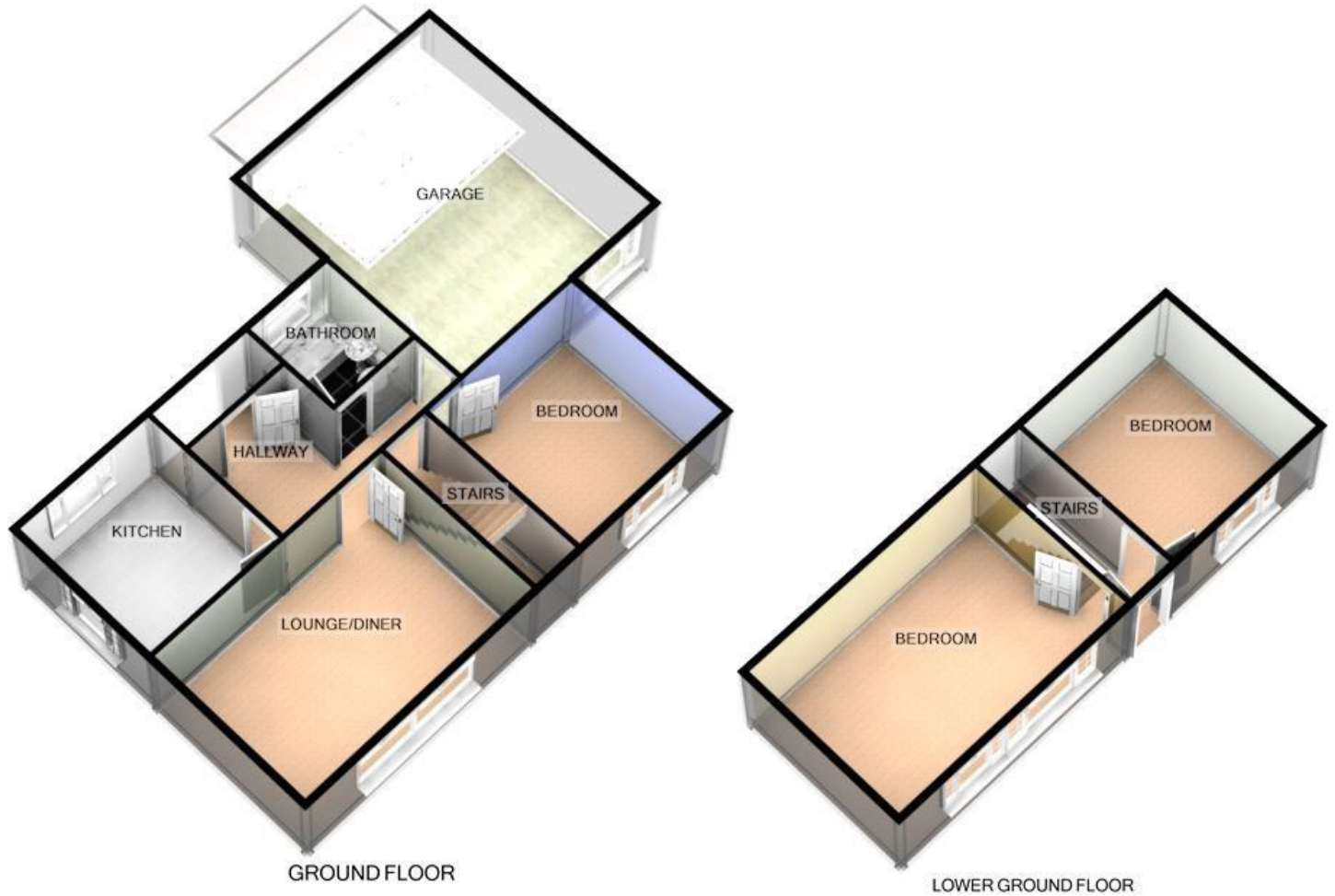
POSSESSION

Vacant possession on completion of purchase.

VIEWINGS

By appointment through the Agent, Black Grace Cowley.

FLOORPLAN



For illustrative purposes only. Decorative finishes, fixtures, fittings and furnishings do not represent the current state of the property. Measurements are approximate. Not to scale
Made with Metropix ©2018