



ASKING PRICE

£115,000

THE DETAILS



Apartment 7
Atholl Buildings, Peel
£115,000

call in today or visit www.blackgracecowley.com for more details

e: peel@blackgracecowley.com | w: blackgracecowley.com | t: +44 (0) 1624 845 696

a: 9 Atholl Place, PEEL, Isle of Man, IM5 1HE

Apartment 7, Atholl Buildings, Atholl Place, Peel





PROPERTY DETAILS FOR

Apartment 7, Atholl Buildings, Atholl Place, Peel

THE DESCRIPTION

Purpose built second floor apartment situated in an ideal central location within walking distance of shops and local amenities. The refurbished accommodation double glazed throughout with gas fired central heating, comprises Lounge, fitted Kitchen, Bathroom and Double Bedroom. Satellite TV installed. Fire Security System and Entry Phone System. No forward chain.

THE PROPERTY

DIRECTIONS

Atholl Building is located opposite Black Grace Cowley's Peel Office in Atholl Place and at the lower end of Derby Road.

COMMUNAL ENTRANCE HALL

Hallway with private mailbox facilities. Full fire alarm system. Door to basement housing meters for all apartments. Tiled floor. Security lighting. Door leading to apartments.

SECOND FLOOR

APARTMENT 7

HALLWAY

Entry phone and smoke alarm.

LOUNGE (*APPROX 15'11 X 10'6*)

Dual aspect windows providing plenty of natural light. Distant sea views. TV and telephone points. Satellite connection.

e: peel@blackgracecowley.com | **w:** blackgracecowley.com | **t:** +44 (0) 1624 845 696

a: 9 Atholl Place, PEEL, Isle of Man, IM5 1HE



PROPERTY DETAILS FOR

Apartment 7, Atholl Buildings, Atholl Place, Peel

KITCHEN (APPROX 8'9 X 7'8)

Fitted with a range of beech fronted wall, base and drawer units incorporating a single drainer stainless steel sink unit with mixer tap, ceramic hob with built-in oven/grill and pull out extractor above, integrated washer/dryer and fridge, all with tiled background and matching work surfaces. Wall mounted Saunier Duval gas fired central heating boiler. Downlighters. Vinyl flooring.

BEDROOM (APPROX 15'11 X 8'7)

Television point.

BATHROOM (APPROX 6'9 X 6'3)

Fitted with a modern white suite comprising panelled bath with shower attachment, wash hand basin and toilet. Downlighters. Built-in shelved cupboard. Extractor.

TENURE

Tenure is Leasehold. Remainder of a 999 year lease.

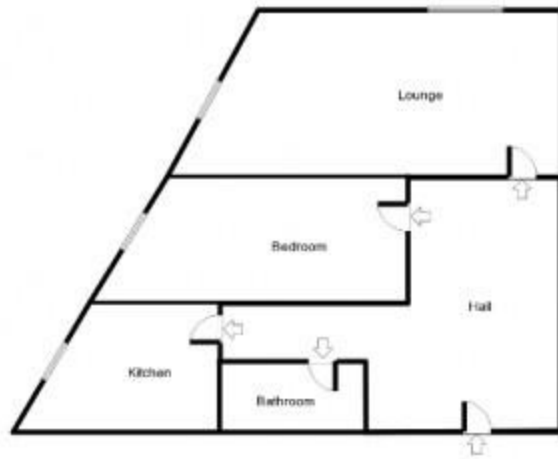
POSSESSION

Vacant possession on completion.

VIEWINGS

By appointment through the Agent, Black Grace Cowley.

FLOORPLAN



For identification only - Not to scale.