

ASKING PRICE

£349,999

THE DETAILS



Apartment 3
The Pavilions, Ramsey
£349,999

call in today or visit www.blackgracecowley.com for more details

e: hello@blackgracecowley.com | w: blackgracecowley.com | t: +44 (0) 1624 645555

a: 51 Victoria Street, DOUGLAS, Isle of Man, IM1 2LD

PROPERTY DETAILS FOR
Apartment 3, The Pavilions, Ramsey



e: hello@blackgracecowley.com | w: blackgracecowley.com | t: +44 (0) 1624 645555

a: 51 Victoria Street, DOUGLAS, Isle of Man, IM1 2LD

PROPERTY DETAILS FOR
Apartment 3, The Pavilions, Ramsey



e: hello@blackgracecowley.com | **w:** blackgracecowley.com | **t:** +44 (0) 1624 645555

a: 51 Victoria Street, DOUGLAS, Isle of Man, IM1 2LD

Apartment 3, The Pavilions, Ramsey

THE DESCRIPTION

Set in Ramsey's most desirable residential location and offering unrivalled levels of tranquillity and style, The Pavilions truly offers the best of both worlds – stunning location yet minutes from all local amenities. With just 15 luxury 2 bedroom apartments set within two blocks, one being two storeys and the other three storeys, these modern apartments are beautifully fitted with luxury kitchens and bathrooms and each apartment coming with 2 secure parking spaces. For golfers, it is without equal. Overlooking the superbly maintained parkland course and boasting private access to residents who are members, subject to terms and conditions.

THE PROPERTY

- Lounge (Approx 24'8 x 13'9)
- Dining Room (Approx 13'9 x 9'9)
- Kitchen (Approx 12'3 x 9'6)
- Bedroom 1 (Approx 12'3 x 13'5)
- En Suite (Approx 7'5 x 5'5)
- Bedroom 2 (Approx 11'6 x 14'2)
- Store (Approx 7'1 x 9'9)
- Bathroom (Approx 7'2 x 10'2)

SPECIFICATIONS

- Electrically operated gated entrance and secure allocated
- Parking with 2 spaces per apartment
- Luxurious communal landscaped garden area
- Heated towel rails in all bathrooms
- Wheelchair accessibility
- Luxuriously decorated and spacious communal areas
- Luxury walnut doors with chrome ironmongery areas and entrance foyers
- Lift access to all floors by Otis
- Colour security video entrance and burglar alarm system
- Comprehensive fire alarm system
- Traditional masonry construction
- Solid concrete floors throughout
- Superior acoustic and thermal insulation
- High performance, low maintenance windows
- Underfloor heating to bathrooms
- Kitchens feature granite worktops incorporating oven, hob, extractor
- Microwave, large fridge/freezer and washer dryer



PROPERTY DETAILS FOR

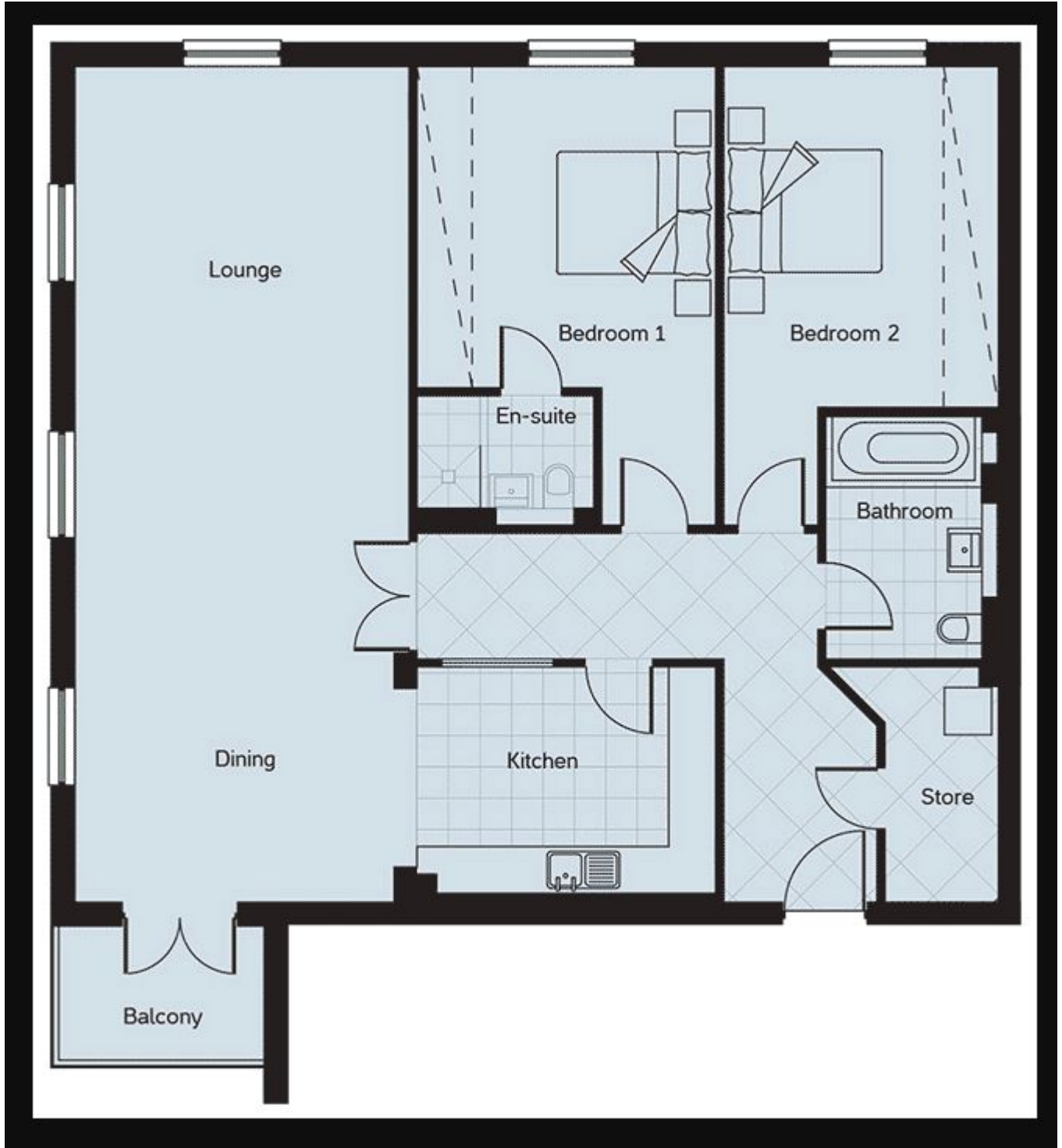
Apartment 3, The Pavilions, Ramsey

- Villeroy & Boch “Subway” white sanitary ware
- Quality Hansgrohe chrome fittings including 10” Raindance shower heads
- Pressurised hot water systems
- Custom made mirror vanity units in walnut
- 9’ high ceilings
- Elegant high quality coving with bespoke skirting and architraves to all rooms
- Luxury marble tiled floors to hallway, kitchen, bathroom, en-suite and storage area
- Balconies to all apartments
- 10 year NHBC guarantee
- Design and construction in excess of current building requirements
- 999 year leasehold with freehold held by management company owned by the residents
- Share-holding apportioned pro rata per apartment by sq. ft
- DD Management act as managing agents administering the running of the management company

e: hello@blackgracecowley.com | **w:** blackgracecowley.com | **t:** +44 (0) 1624 645555

a: 51 Victoria Street, DOUGLAS, Isle of Man, IM1 2LD

FLOORPLAN





PROPERTY DETAILS FOR

Apartment 3, The Pavilions, Ramsey

Disclaimer

These particulars are for information purposes only and do not constitute or form any contract nor should any statement contained herein be relied upon as a representation of fact.

Neither the vendor nor Black Grace Cowley (the firm), nor any officer or employee of the firm accept liability or responsibility for any statement contained herein.

The vendor does not by these particulars, nor does the firm, nor does any officer or any employee of the firm have any authority to make or give any representation or warranty whatsoever as regards the property or otherwise. It is the sole responsibility of any person interested in the property described in these particulars to make all proper enquiries and searches to verify the description of the property and all other particulars herein.

e: hello@blackgracecowley.com | **w:** blackgracecowley.com | **t:** +44 (0) 1624 645555

a: 51 Victoria Street, DOUGLAS, Isle of Man, IM1 2LD