



ASKING PRICE

£1,150 PCM

THE DETAILS

 3  1  2



9 Ellenbrook Drive
Kewaigne, Douglas
£1,150 pcm

call in today or visit www.blackgracecowley.com for more details

e: hello@blackgracecowley.com | w: blackgracecowley.com | t: +44 (0) 1624 645 555

a: 51 Victoria Street, DOUGLAS, Isle of Man, IM1 2LD

PROPERTY DETAILS FOR
9 Ellenbrook Drive, Kewaigne, Douglas



9 Ellenbrook Drive, Kewaigne, Douglas





PROPERTY DETAILS FOR

9 Ellenbrook Drive, Kewaigue, Douglas

THE DESCRIPTION

- Spacious 3 bed bungalow in a quiet cul-de-sac with front and large rear garden
- Separate kitchen with built in appliances
- Large lounge leading into the conservatory
- Family bathroom
- Single detached garage
- No Smokers/DHSS
- Pets Considered
- Available Immediately

THE PROPERTY

DIRECTIONS

Leave Douglas centre via Castletown Old Road and continue along towards Kewaigue and beyond the turning on the left to Port Soderick. Take the next turning left into Ellenbrook Drive and continue towards the top of the cul-de-sac where the property will be found on the left hand side.

SUN ROOM

Door to front exterior of the property, hall and opening to lounge.

LOUNGE

With fireplace door to hallway.

KITCHEN

Fitted units with integrated appliances to include; Door to rear garden and opening to utility area.

BEDROOM 1

Double bedroom with fitted over bed storage cupboards.

BEDROOM 2

Good sized double bedroom.

BEDROOM 3

Double Bedroom.

e: hello@blackgracecowley.com | w: blackgracecowley.com | t: +44 (0) 1624 645 555

a: 51 Victoria Street, DOUGLAS, Isle of Man, IM1 2LD



PROPERTY DETAILS FOR

9 Ellenbrook Drive, Kewaigne, Douglas

BATHROOM

Fitted with a coloured suite comprising corner bath with shower over, wash hand basin and toilet.

GARAGE

Single detached garage.

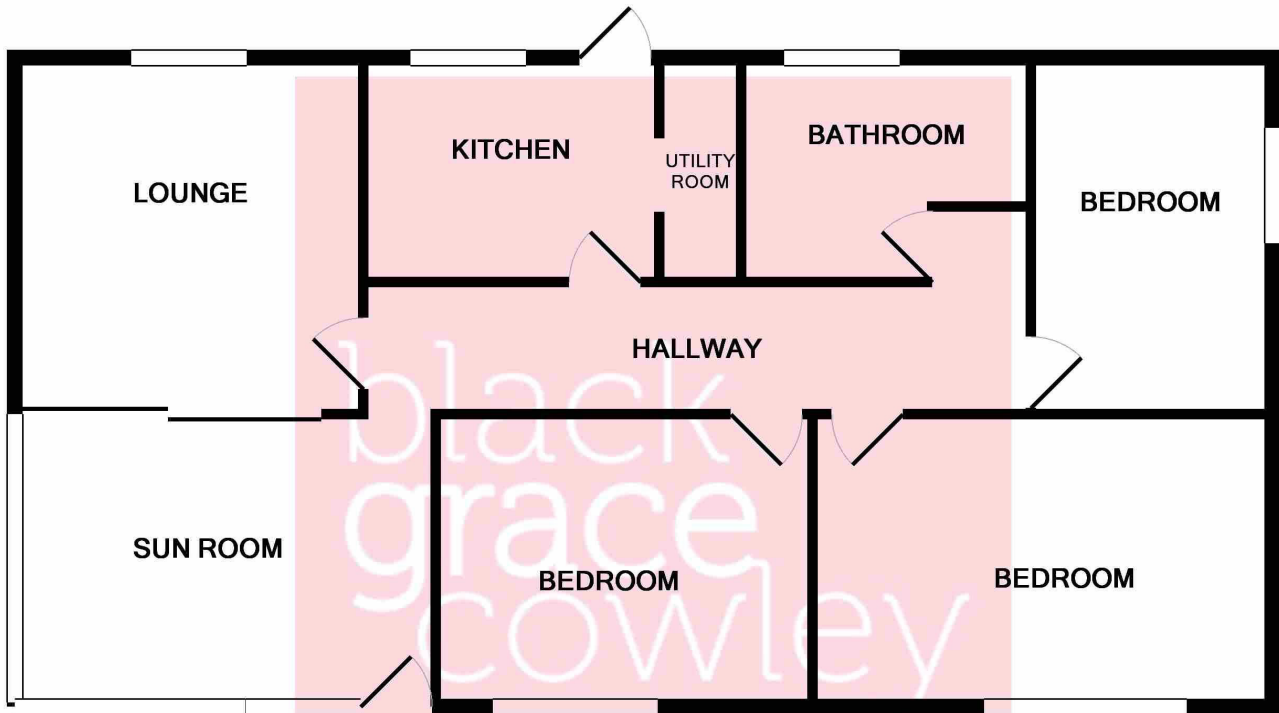
OUTSIDE

Off road parking for 3 cars. Front garden laid to lawn and extensive rear garden mostly laid to lawn.

VIEWINGS

By appointment through the Agent, Black Grace Cowley.

FLOORPLAN



ESTATE AGENTS

Whilst every attempt has been made to ensure the accuracy of the floor plan contained here, measurements of doors, windows, rooms and any other items are approximate and no responsibility is taken for any error, omission, or mis-statement. This plan is for illustrative purposes only and should be used as such by any prospective purchaser. The services, systems and appliances shown have not been tested and no guarantee as to their operability or efficiency can be given
Made with Metropix ©2019