



ASKING PRICE

£119,950



## THE DETAILS



2



1



1



122 Cherry Orchard Apartments

Port Erin

£119,950

call in today or visit [www.blackgracecowley.com](http://www.blackgracecowley.com) for more details

e: [hello@blackgracecowley.com](mailto:hello@blackgracecowley.com) | w: [blackgracecowley.com](http://blackgracecowley.com) | t: +44 (0) 1624 645555

a: 51 Victoria Street, DOUGLAS, Isle of Man, IM1 2LD











PROPERTY DETAILS FOR

## 122 Cherry Orchard Apartments, Port Erin

### THE DESCRIPTION

- Purpose built apartment situated in the heart of Port Erin
- Fully fitted kitchen with separate living room with balcony
- Two bedrooms and family bathroom
- Investment property being sold with tenants in situ
- Off road parking to the rear of the property
- Great central location close to local shops
- Active management company

### THE PROPERTY

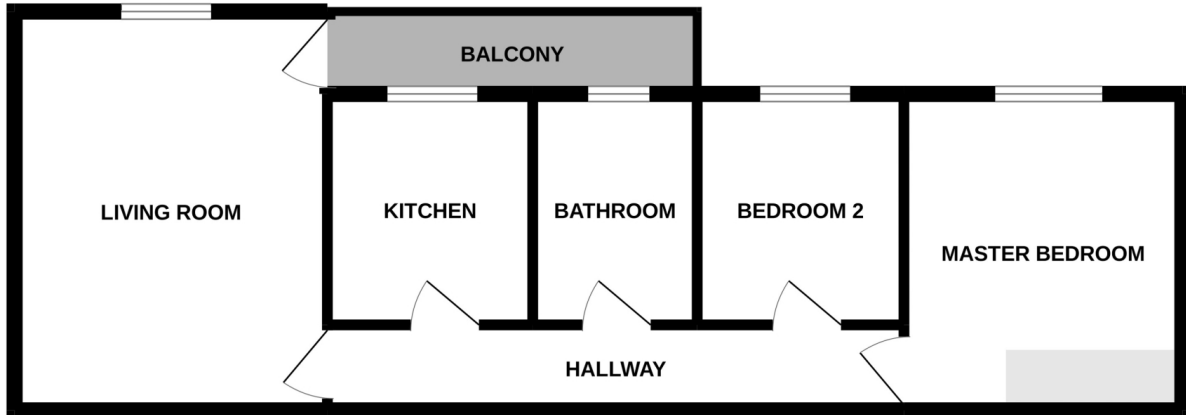
Black Grace Cowley are delighted to offer this well presented two bedroom apartment situated in a great location close to all local amenities. Currently tenanted this property is being sold as an investment property with the tenant in situ. The property benefits from a fully fitted kitchen, separate living room, two bedrooms and family bathroom. To the rear of the apartments is plenty of off road parking.

**e:** [hello@blackgracecowley.com](mailto:hello@blackgracecowley.com) | **w:** [blackgracecowley.com](http://blackgracecowley.com) | **t:** +44 (0) 1624 645555

**a:** 51 Victoria Street, DOUGLAS, Isle of Man, IM1 2LD

## FLOORPLAN

### GROUND FLOOR



Whilst every attempt has been made to ensure the accuracy of the floorplan contained here, measurements of doors, windows, rooms and any other items are approximate and no responsibility is taken for any error, omission or mis-statement. This plan is for illustrative purposes only and should be used as such by any prospective purchaser. The services, systems and appliances shown have not been tested and no guarantee as to their operability or efficiency can be given.  
Made with Metropix ©2022



PROPERTY DETAILS FOR

# 122 Cherry Orchard Apartments, Port Erin

## Disclaimer

These particulars are for information purposes only and do not constitute or form any contract nor should any statement contained herein be relied upon as a representation of fact.

Neither the vendor nor Black Grace Cowley (the firm), nor any officer or employee of the firm accept liability or responsibility for any statement contained herein.

The vendor does not by these particulars, nor does the firm, nor does any officer or any employee of the firm have any authority to make or give any representation or warranty whatsoever as regards the property or otherwise. It is the sole responsibility of any person interested in the property described in these particulars to make all proper enquiries and searches to verify the description of the property and all other particulars herein.

**e:** [hello@blackgracecowley.com](mailto:hello@blackgracecowley.com) | **w:** [blackgracecowley.com](http://blackgracecowley.com) | **t:** +44 (0) 1624 645555

**a:** 51 Victoria Street, DOUGLAS, Isle of Man, IM1 2LD