



black  
grace  
cowley  
ESTATE AGENTS

ASKING PRICE

£299,500

## THE DETAILS

 2     2     1



Apartment 3, Spectrum Apartments  
Douglas  
£299,500

call in today or visit [www.blackgracecowley.com](http://www.blackgracecowley.com) for more details

e: [hello@blackgracecowley.com](mailto:hello@blackgracecowley.com) | w: [blackgracecowley.com](http://blackgracecowley.com) | t: +44 (0) 1624 645555

a: 51 Victoria Street, DOUGLAS, Isle of Man, IM1 2LD



## Apartment 3, Spectrum Apartments, Douglas





## Apartment 3, Spectrum Apartments, Douglas



## THE DESCRIPTION

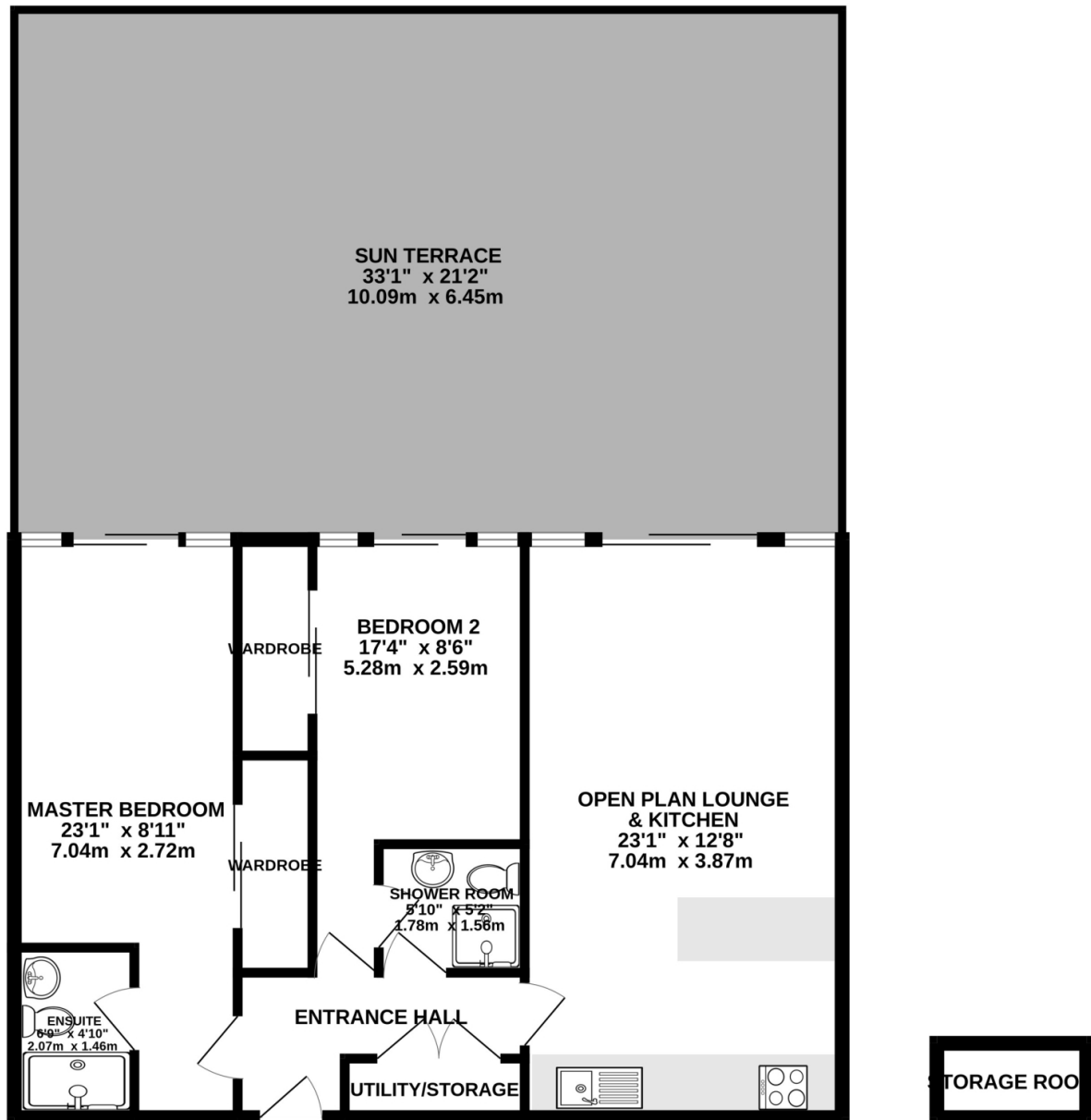
- Ground floor executive purpose built apartment
- Open plan Kitchen/Living Room
- Two Bedrooms, Two Bathrooms
- Large private patio
- Sea views across Douglas Bay
- Communal courtyard
- Allocated underground Parking Space and Store Room
- Electric storage heaters
- No onward chain

## THE PROPERTY

Black Grace Cowley are delighted to offer this ground floor purpose built apartment within the popular Spectrum Apartments complex on Central Promenade. The apartment is accessed through the East entrance of the building. Good size entrance hall, open plan Kitchen with modern units and integrated appliances. Spacious living area with sliding patio doors onto the private terrace. Master Bedroom with fitted wardrobes and en suite Shower Room. Second Bedroom also has fitted wardrobes and a Jack and Jill Shower Room. uPVC Double Glazing throughout and Electric storage heaters. Allocated underground parking space and store room (located near the building entrance). The property is offered for sale with no onward chain.

## FLOORPLAN

GROUND FLOOR  
782 sq.ft. (72.7 sq.m.) approx.



TOTAL FLOOR AREA : 782 sq.ft. (72.7 sq.m.) approx.

Whilst every attempt has been made to ensure the accuracy of the floorplan contained here, measurements of doors, windows, rooms and any other items are approximate and no responsibility is taken for any error, omission or mis-statement. This plan is for illustrative purposes only and should be used as such by any prospective purchaser. The services, systems and appliances shown have not been tested and no guarantee as to their operability or efficiency can be given.  
Made with Metropix ©2023

**e:** [hello@blackgracecowley.com](mailto:hello@blackgracecowley.com) | **w:** [blackgracecowley.com](http://blackgracecowley.com) | **t:** +44 (0) 1624 645555

**a:** 51 Victoria Street, DOUGLAS, Isle of Man, IM1 2LD



PROPERTY DETAILS FOR

## Apartment 3, Spectrum Apartments, Douglas

### Disclaimer

These particulars are for information purposes only and do not constitute or form any contract nor should any statement contained herein be relied upon as a representation of fact.

Neither the vendor nor Black Grace Cowley (the firm), nor any officer or employee of the firm accept liability or responsibility for any statement contained herein.

The vendor does not by these particulars, nor does the firm, nor does any officer or any employee of the firm have any authority to make or give any representation or warranty whatsoever as regards the property or otherwise. It is the sole responsibility of any person interested in the property described in these particulars to make all proper enquiries and searches to verify the description of the property and all other particulars herein.

**e:** [hello@blackgracecowley.com](mailto:hello@blackgracecowley.com) | **w:** [blackgracecowley.com](https://blackgracecowley.com) | **t:** +44 (0) 1624 645555

**a:** 51 Victoria Street, DOUGLAS, Isle of Man, IM1 2LD