



ASKING PRICE

£219,000

THE DETAILS



2 Glen View Cottages
Main Road, Foxdale
£219,000

call in today or visit www.blackgracecowley.com for more details

e: peel@blackgracecowley.com | w: blackgracecowley.com | t: +44 (0) 1624 845 696

a: 9 Atholl Place, PEEL, Isle of Man, IM5 1HE







THE DESCRIPTION

- Recently renovated south facing semi-detached house
- Centrally located in Foxdale at the end of a private lane
- Only a short commute to Douglas, Peel and the South of the island
- Reception Hall, Utility Area
- Open plan kitchen/Diner/lounge with countryside views
- 2 Bedrooms, 1 En-suite and Shower Room
- Off road parking
- No onward chain

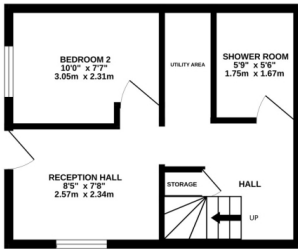
THE PROPERTY

Black Grace Cowley are pleased to offer 2 Glen View Cottages to the market. A recently renovated south facing semi-detached house situated in the heart of Foxdale at the end of a private lane and only a short drive to Douglas, Peel, the South and North of the island. Multi-functional spacious reception hall leading to the second bedroom, utility area and shower room. Stairs provide access to the first floor giving the bright dual aspect open plan kitchen/diner/ lounge spectacular countryside views. On the second floor is the master bedroom with countryside views, a modern en-suite shower room and wardrobe space. Outside is off road parking and ample space to create a garden if desired.

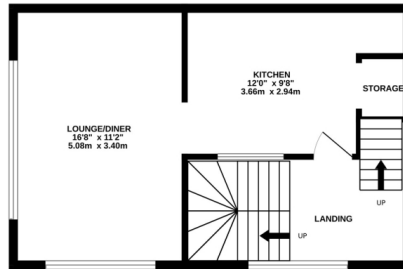
Offered for sale with no onward chain. Gas fired central heating.

FLOORPLAN

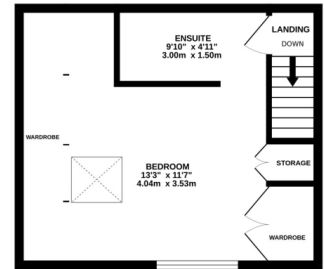
GROUND FLOOR
288 sq.ft. (26.7 sq.m.) approx.



1ST FLOOR
427 sq.ft. (39.7 sq.m.) approx.



2ND FLOOR
324 sq.ft. (30.1 sq.m.) approx.



TOTAL FLOOR AREA : 1038 sq.ft. (96.5 sq.m.) approx.

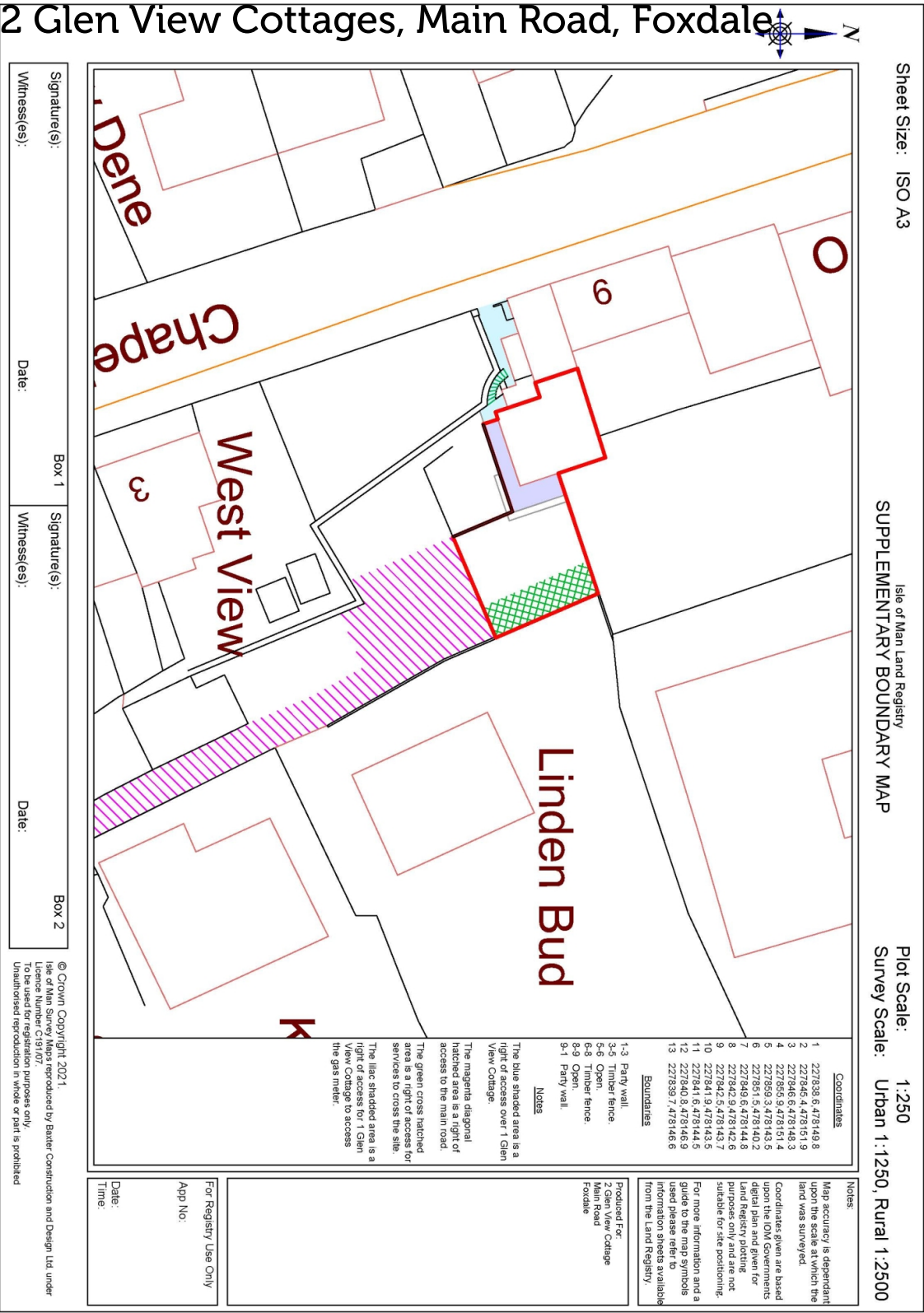
Whilst every attempt has been made to ensure the accuracy of the floorplan contained here, measurements of doors, windows, rooms and any other items are approximate and no responsibility is taken for any error, omission or mis-statement. This plan is for illustrative purposes only and should be used as such by any prospective purchaser. The services, systems and appliances shown have not been tested and no guarantee as to their operability or efficiency can be given.
Made with Metropix ©2023

FLOORPLAN



PROPERTY DETAILS FOR

2 Glen View Cottages, Main Road, Foxdale



PROPERTY DETAILS FOR

e: peel@blackgracecowley.com | w: blackgracecowley.com | t: +44 (0) 1624 845 696
2 Glen View Cottages, Main Road, Foxdale
a: 9 Atholl Place, PEEL, Isle of Man, IM5 1HE

Disclaimer

These particulars are for information purposes only and do not constitute or form any contract nor should any statement contained herein be relied upon as a representation of fact.

Neither the vendor nor Black Grace Cowley (the firm), nor any officer or employee of the firm accept liability or responsibility for any statement contained herein.

The vendor does not by these particulars, nor does the firm, nor does any officer or any employee of the firm have any authority to make or give any representation or warranty whatsoever as regards the property or otherwise. It is the sole responsibility of any person interested in the property described in these particulars to make all proper enquiries and searches to verify the description of the property and all other particulars herein.

e: peel@blackgracecowley.com | **w:** blackgracecowley.com | **t:** +44 (0) 1624 845 696

a: 9 Atholl Place, PEEL, Isle of Man, IM5 1HE