



£235,000

SOCIAL CLUB & PREP KITCHEN

TOTAL BASEMENT AREA
229.95 m²

TOTAL GROUND FLOOR AREA
72.55 m²

BAR AREA
24.55m x 8.35m max

STORE 1
3.44m x 1.2m max

STORE 2
4.9m x 2.9m max

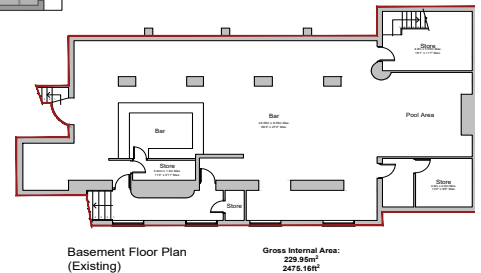
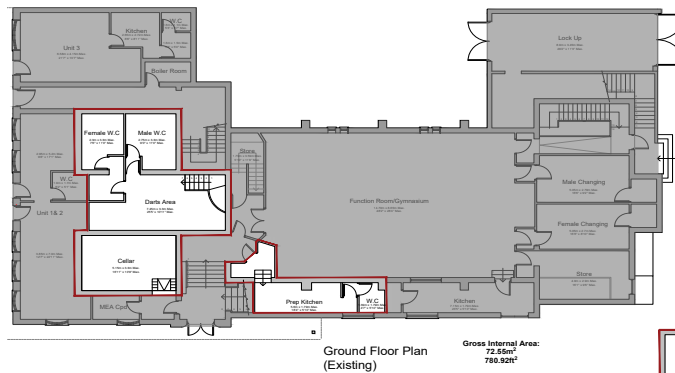
STORE 3
4.9m x 3.55m max

DARTS AREA
7.45m x 3.3m max

CELLAR
5.15m x 1.2m max

PREP KITCHEN
5.6m x 1.79m max

PREP KITCHEN W.C
1.39m x 1.79m max



FEMALE W.C
2.3m x 3.3m max

MALE W.C
2.75m x 3.3m max