



ASKING PRICE

£149,950

THE DETAILS



1



1



1



14 Saddle Mews

Douglas

£149,950

call in today or visit www.blackgracecowley.com for more details

e: hello@blackgracecowley.com | w: blackgracecowley.com | t: +44 (0) 1624 645555

a: 51 Victoria Street, DOUGLAS, Isle of Man, IM1 2LD

PROPERTY DETAILS FOR
14 Saddle Mews, Douglas



e: hello@blackgracecowley.com | w: blackgracecowley.com | t: +44 (0) 1624 645555

a: 51 Victoria Street, DOUGLAS, Isle of Man, IM1 2LD

PROPERTY DETAILS FOR
14 Saddle Mews, Douglas



e: hello@blackgracecowley.com | **w:** blackgracecowley.com | **t:** +44 (0) 1624 645555

a: 51 Victoria Street, DOUGLAS, Isle of Man, IM1 2LD

THE DESCRIPTION

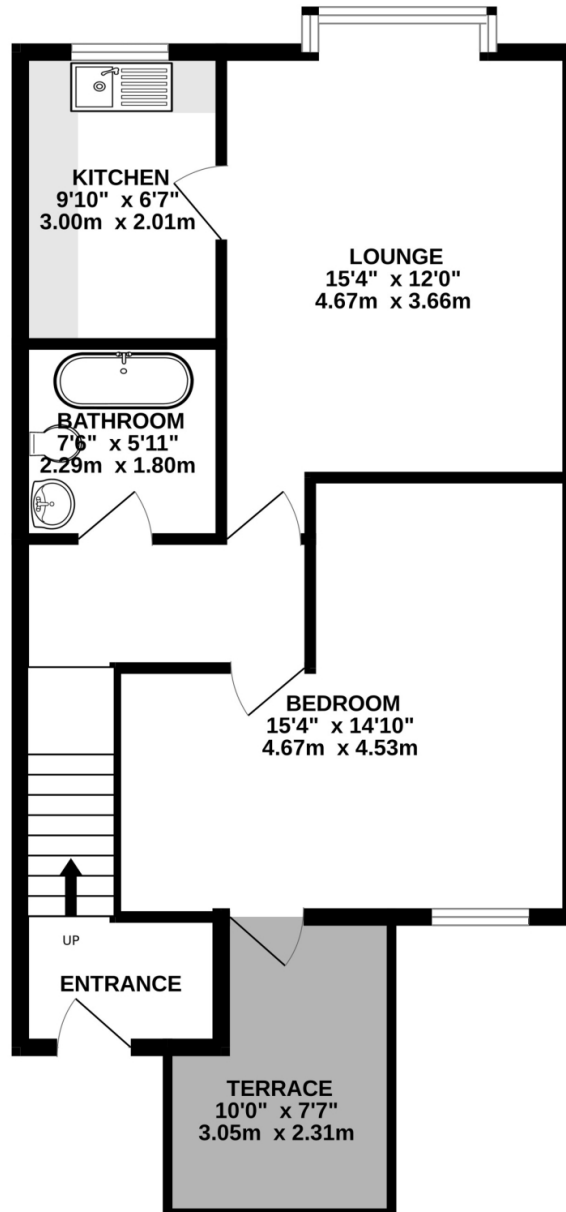
- First floor purpose built apartment within Saddle Mews
- Conveniently situated in the over 50's development with on site Manager
- Requires some modernisation
- Good size Lounge Diner, Kitchen, large double Bedroom and Bathroom
- Loft space with attic storage
- Private terrace to the front, ample on site parking
- Gas fired central heating, timber framed double glazed windows
- Offered for sale with no onward chain
- Monthly services charge approximately £125

THE PROPERTY

Black Grace Cowley are delighted to offer the opportunity to purchase this first floor purpose built apartment within the Saddle Mews retirement development with on site Manager. The accommodation comprises Entrance Lobby, carpeted stairs leading to the first floor landing with loft hatch giving access to attic space, large double Bedroom with fitted double wardrobes, timber framed window looking onto the gardens and hardwood door leading out to the apartment's private terrace with fibreglass floor and wrought iron railings. Off the landing is a door to the Lounge Diner with a square bay picture window looking onto the property's grounds. Door to the Kitchen with a range of base, wall and drawer units with laminate work tops again looking over the communal gardens. Wall mounted Vaillant gas fired central heating boiler, space and plumbing for all modern appliances. Large Bathroom with half tiled walls, panelled bath, pedestal wash hand basin and W.C. Communal gardens and ample parking on site.

FLOORPLAN

GROUND FLOOR
583 sq.ft. (54.2 sq.m.) approx.



TOTAL FLOOR AREA : 583 sq.ft. (54.2 sq.m.) approx.

Whilst every attempt has been made to ensure the accuracy of the floorplan contained here, measurements of doors, windows, rooms and any other items are approximate and no responsibility is taken for any error, omission or mis-statement. This plan is for illustrative purposes only and should be used as such by any prospective purchaser. The services, systems and appliances shown have not been tested and no guarantee as to their operability or efficiency can be given.
Made with Metropix ©2023

e: hello@blackgracecowley.com | **w:** blackgracecowley.com | **t:** +44 (0) 1624 645555

a: 51 Victoria Street, DOUGLAS, Isle of Man, IM1 2LD



PROPERTY DETAILS FOR

14 Saddle Mews, Douglas

Disclaimer

These particulars are for information purposes only and do not constitute or form any contract nor should any statement contained herein be relied upon as a representation of fact.

Neither the vendor nor Black Grace Cowley (the firm), nor any officer or employee of the firm accept liability or responsibility for any statement contained herein.

The vendor does not by these particulars, nor does the firm, nor does any officer or any employee of the firm have any authority to make or give any representation or warranty whatsoever as regards the property or otherwise. It is the sole responsibility of any person interested in the property described in these particulars to make all proper enquiries and searches to verify the description of the property and all other particulars herein.

e: hello@blackgracecowley.com | **w:** blackgracecowley.com | **t:** +44 (0) 1624 645555

a: 51 Victoria Street, DOUGLAS, Isle of Man, IM1 2LD