



ASKING PRICE

£164,950

THE DETAILS



1



1



1



Apartment 62, Spectrum Apartments
Central Promenade, Douglas
£164,950

call in today or visit www.blackgracecowley.com for more details

e: hello@blackgracecowley.com | w: blackgracecowley.com | t: +44 (0) 1624 645555

a: 51 Victoria Street, DOUGLAS, Isle of Man, IM1 2LD

Apartment 62 Spectrum Apartments, Douglas



e: hello@blackgracecowley.com | w: blackgracecowley.com | t: +44 (0) 1624 645555

a: 51 Victoria Street, DOUGLAS, Isle of Man, IM1 2LD

Apartment 62 Spectrum Apartments, Douglas



Apartment 62 Spectrum Apartments, Douglas



Apartment 62 Spectrum Apartments, Douglas

THE DESCRIPTION

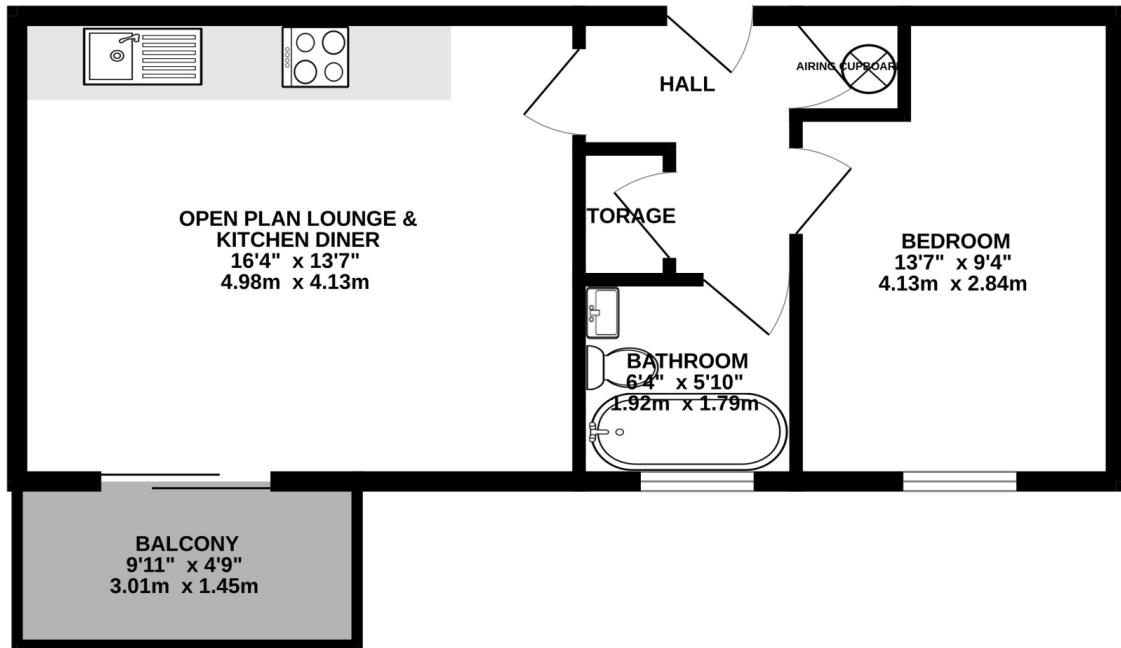
- Purpose Built Modern 2nd floor apartment in Douglas
- 1 Bedroom, 1 Bathroom
- Large open plan Lounge/Kitchen/Dining Room
- Private balcony with Courtyard views
- Security entry system, lift and staircase access
- Secure allocated parking space
- Additional lock up store room
- No onward chain

THE PROPERTY

Black Grace Cowley are delighted to offer this purpose built 2nd floor (1st floor overlooking the Courtyard) modern apartment on Central Promenade in Douglas. Upon entering the apartment, good sized Entrance Hall with fitted storage cupboards and separate heating/electric cupboard. Spacious double Bedroom with alcove for wardrobe and uPVC double glazed window overlooking the courtyard. Bathroom with fitted modern suite comprising of double ended bathtub, wash hand basin and WC. Door to the right leads into the open plan Kitchen/Living/Dining Room. Modern fitted kitchen along one wall with integrated appliances. Patio sliding doors out onto the apartments private balcony overlooking the courtyard and water feature. The apartment also comes with an allocated parking space and additional lock up storage cupboard. Property is offered for sale with no onward chain. Electric storage heaters and uPVC double glazed. Walking distance to Douglas town Centre and local amenities. Service Charge £1677.72 (July 22 – June 23).

FLOORPLAN

GROUND FLOOR
433 sq.ft. (40.2 sq.m.) approx.



TOTAL FLOOR AREA : 433 sq.ft. (40.2 sq.m.) approx.

Whilst every attempt has been made to ensure the accuracy of the floorplan contained here, measurements of doors, windows, rooms and any other items are approximate and no responsibility is taken for any error, omission or mis-statement. This plan is for illustrative purposes only and should be used as such by any prospective purchaser. The services, systems and appliances shown have not been tested and no guarantee as to their operability or efficiency can be given.
Made with Metropix ©2023



PROPERTY DETAILS FOR

Apartment 62 Spectrum Apartments, Douglas

Disclaimer

These particulars are for information purposes only and do not constitute or form any contract nor should any statement contained herein be relied upon as a representation of fact.

Neither the vendor nor Black Grace Cowley (the firm), nor any officer or employee of the firm accept liability or responsibility for any statement contained herein.

The vendor does not by these particulars, nor does the firm, nor does any officer or any employee of the firm have any authority to make or give any representation or warranty whatsoever as regards the property or otherwise. It is the sole responsibility of any person interested in the property described in these particulars to make all proper enquiries and searches to verify the description of the property and all other particulars herein.

e: hello@blackgracecowley.com | **w:** blackgracecowley.com | **t:** +44 (0) 1624 645555

a: 51 Victoria Street, DOUGLAS, Isle of Man, IM1 2LD