



ASKING PRICE

£419,950

THE DETAILS



10 May Hill

Ramsey

£419,950

call in today or visit www.blackgracecowley.com for more details

e: hello@blackgracecowley.com | w: blackgracecowley.com | t: +44 (0) 1624 645555

a: 51 Victoria Street, DOUGLAS, Isle of Man, IM1 2LD

PROPERTY DETAILS FOR
10 May Hill, Ramsey



e: hello@blackgracecowley.com | **w:** blackgracecowley.com | **t:** +44 (0) 1624 645555

a: 51 Victoria Street, DOUGLAS, Isle of Man, IM1 2LD

PROPERTY DETAILS FOR
10 May Hill, Ramsey



e: hello@blackgracecowley.com | w: blackgracecowley.com | t: +44 (0) 1624 645555

a: 51 Victoria Street, DOUGLAS, Isle of Man, IM1 2LD



PROPERTY DETAILS FOR

10 May Hill, Ramsey

THE DESCRIPTION

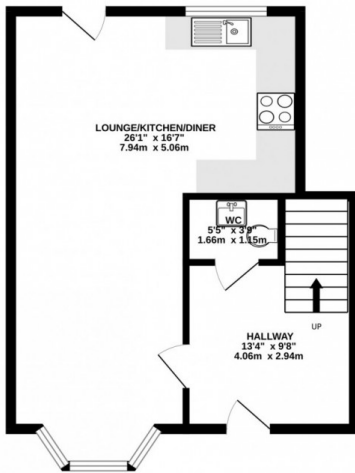
- Newly built terraced Victorian Style 3 storey townhouse
- Spacious Hallway and W.C.
- Open plan Lounge/Kitchen/Diner
- 4 double Bedrooms and 2 Bathrooms
- 2 allocated parking spaces to the rear
- Located on the TT Course
- 10 year warranty

e: hello@blackgracecowley.com | **w:** blackgracecowley.com | **t:** +44 (0) 1624 645555

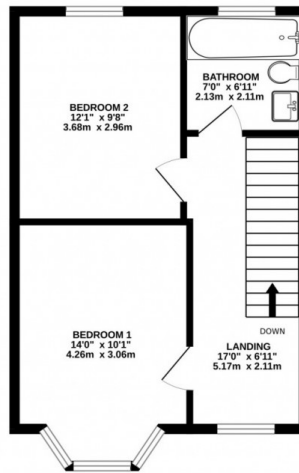
a: 51 Victoria Street, DOUGLAS, Isle of Man, IM1 2LD

FLOORPLAN

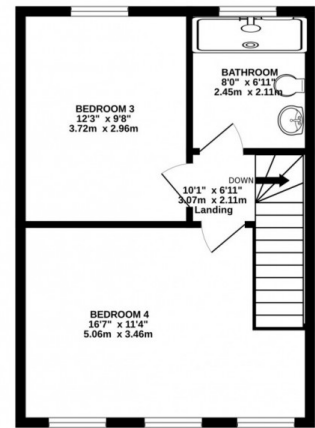
GROUND FLOOR
450 sq.ft. (41.8 sq.m.) approx.



1ST FLOOR
409 sq.ft. (38.0 sq.m.) approx.



2ND FLOOR
392 sq.ft. (36.4 sq.m.) approx.



TOTAL FLOOR AREA : 1250 sq.ft. (116.2 sq.m.) approx.

Whilst every attempt has been made to ensure the accuracy of the floorplan contained here, measurements of doors, windows, rooms and any other items are approximate and no responsibility is taken for any error, omission or mis-statement. This plan is for illustrative purposes only and should be used as such by any prospective purchaser. The services, systems and appliances shown have not been tested and no guarantee as to their operability or efficiency can be given.
Made with Metropix ©2023



PROPERTY DETAILS FOR

10 May Hill, Ramsey

Disclaimer

These particulars are for information purposes only and do not constitute or form any contract nor should any statement contained herein be relied upon as a representation of fact.

Neither the vendor nor Black Grace Cowley (the firm), nor any officer or employee of the firm accept liability or responsibility for any statement contained herein.

The vendor does not by these particulars, nor does the firm, nor does any officer or any employee of the firm have any authority to make or give any representation or warranty whatsoever as regards the property or otherwise. It is the sole responsibility of any person interested in the property described in these particulars to make all proper enquiries and searches to verify the description of the property and all other particulars herein.

e: hello@blackgracecowley.com | **w:** blackgracecowley.com | **t:** +44 (0) 1624 645555

a: 51 Victoria Street, DOUGLAS, Isle of Man, IM1 2LD