



ASKING PRICE

£220,000



### THE DETAILS

 9       5       2



David Gray House  
6 Drury Terrace, Douglas  
£220,000

call in today or visit [www.blackgracecowley.com](http://www.blackgracecowley.com) for more details

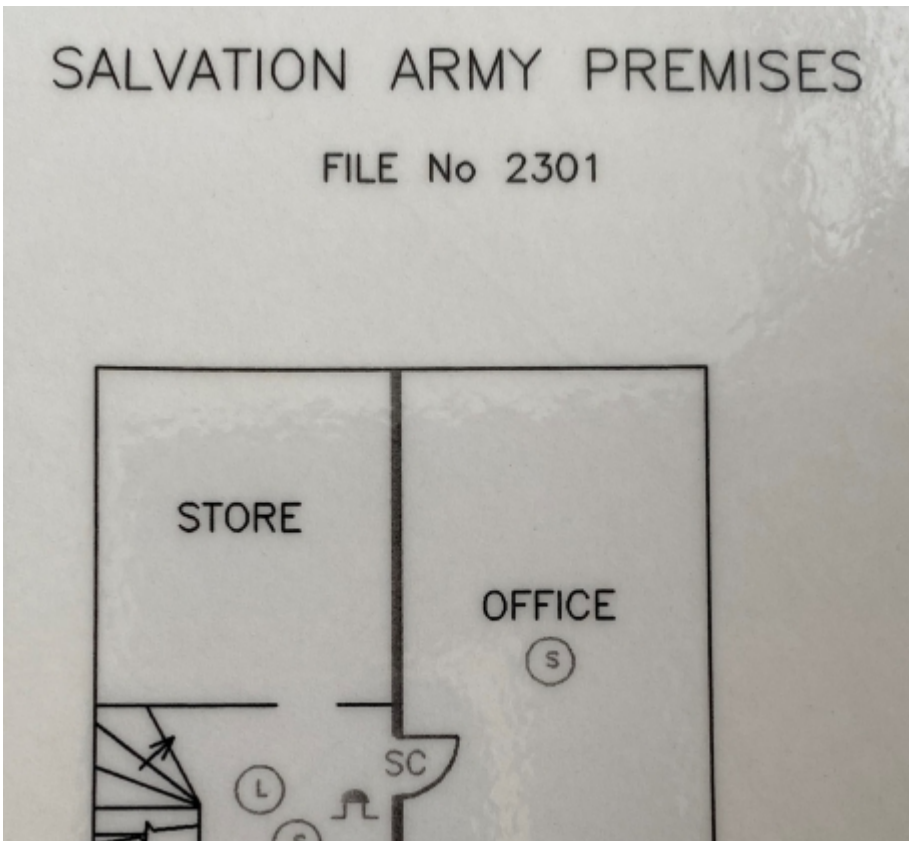
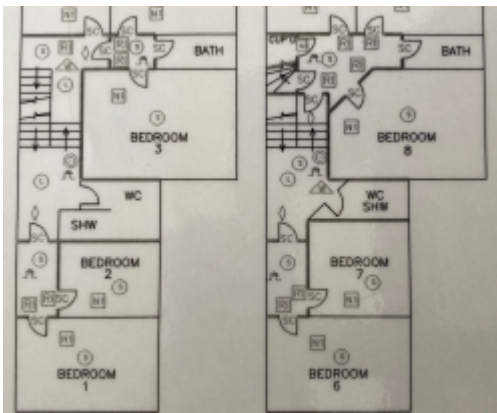
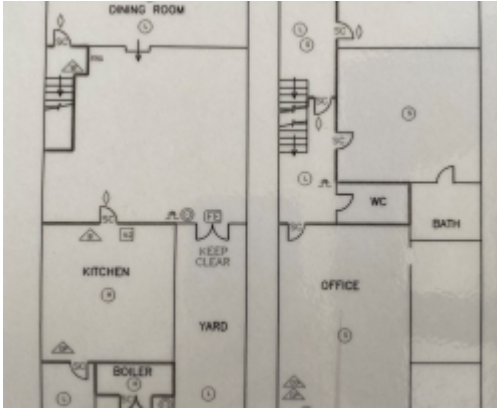
e: [hello@blackgracecowley.com](mailto:hello@blackgracecowley.com) | w: [blackgracecowley.com](http://blackgracecowley.com) | t: +44 (0) 1624 645555

a: 51 Victoria Street, DOUGLAS, Isle of Man, IM1 2LD

# David Gray House, 6 Drury Terrace, Douglas



# David Gray House, 6 Drury Terrace, Douglas





PROPERTY DETAILS FOR

# David Gray House, 6 Drury Terrace, Douglas

## THE DESCRIPTION

- **COMMERCIAL MORTGAGE REQUIRED**

- Large mid-terraced commercial building arranged over five floors.
- Conveniently located in Douglas Town Centre, close to all amenities.
- Nine bedrooms with commercial kitchen with dining area.
- In need of refurbishment and some remedial works.
- Would make a lovely large town house – subject to Change of Use from Commercial.

## THE PROPERTY

### DESCRIPTION

An opportunity to purchase this large mid-terraced commercial building arranged over five floors, on Drury Terrace just past Broadway. The property was previously used as a residential care facility and comprises of nine bedrooms (all with sinks), a commercial kitchen with dining area in the lower ground floor, and communal WCs and bathrooms. There is a large lounge and three rear offices on the ground floor.

The property is in need of refurbishment and some remedial works.

It would make a lovely large town house – subject to 'Change of Use' from Commercial.

### LOCATION

Travelling up Broadway from The Promenade, go through the traffic lights at the junction with Victoria Road and continue up. The property can be found on your left-hand side clearly marked with our For Sale board.

### ACCOMMODATION

Ground Floor: Entrance porch and hallway, Large front lounge, Rear lounge with bathroom, Two offices at the rear – with new Worcester Boiler.

Stairs down to Lower Ground Floor: Split level Dining Area, larder cupboard, Large Kitchen ,WC, Door to rear yard

e: [hello@blackgracecowley.com](mailto:hello@blackgracecowley.com) | w: [blackgracecowley.com](http://blackgracecowley.com) | t: +44 (0) 1624 645555

a: 51 Victoria Street, DOUGLAS, Isle of Man, IM1 2LD



PROPERTY DETAILS FOR

## David Gray House, 6 Drury Terrace, Douglas

(From Ground Floor) stairs up to rear half landing: Office, Double bedroom with sink, Shower Room

Stairs to First Floor (Front): Double Bedroom with sink, Bathroom, Bedroom with sink, Bedroom with sink

Stairs up to rear half landing: Shower Room, Bedroom with sink, Bedroom with sink

Stairs to Second Floor (front): Single Bedroom with sink, Double Bedroom with sink, Double Bedroom with sink, Bathroom, Store cupboard

Stairs to attic: Store Room (front), Store Room with sink (rear)

**e:** [hello@blackgracecowley.com](mailto:hello@blackgracecowley.com) | **w:** [blackgracecowley.com](http://blackgracecowley.com) | **t:** +44 (0) 1624 645555

**a:** 51 Victoria Street, DOUGLAS, Isle of Man, IM1 2LD



PROPERTY DETAILS FOR

# David Gray House, 6 Drury Terrace, Douglas

## Disclaimer

These particulars are for information purposes only and do not constitute or form any contract nor should any statement contained herein be relied upon as a representation of fact.

Neither the vendor nor Black Grace Cowley (the firm), nor any officer or employee of the firm accept liability or responsibility for any statement contained herein.

The vendor does not by these particulars, nor does the firm, nor does any officer or any employee of the firm have any authority to make or give any representation or warranty whatsoever as regards the property or otherwise. It is the sole responsibility of any person interested in the property described in these particulars to make all proper enquiries and searches to verify the description of the property and all other particulars herein.

**e:** [hello@blackgracecowley.com](mailto:hello@blackgracecowley.com) | **w:** [blackgracecowley.com](http://blackgracecowley.com) | **t:** +44 (0) 1624 645555

**a:** 51 Victoria Street, DOUGLAS, Isle of Man, IM1 2LD