

# THE AILSA

FOUR-BEDROOM TOWNHOUSE

PLOT  
7



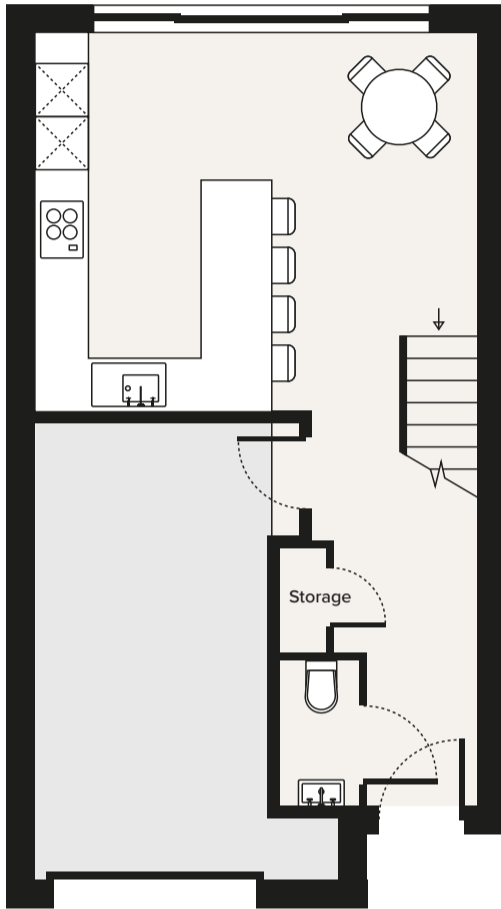
**RAILWAY COURT**

P O R T S T M A R Y



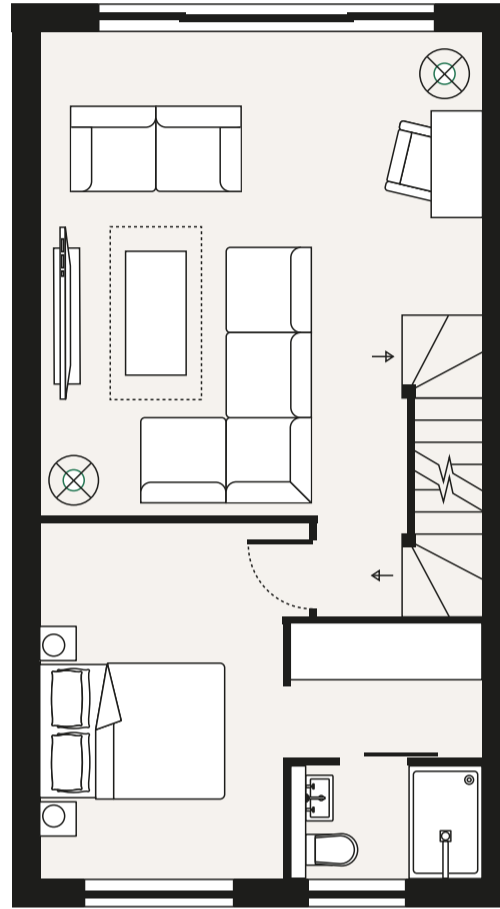
# THE AILSA

## FOUR-BEDROOM TOWNHOUSE



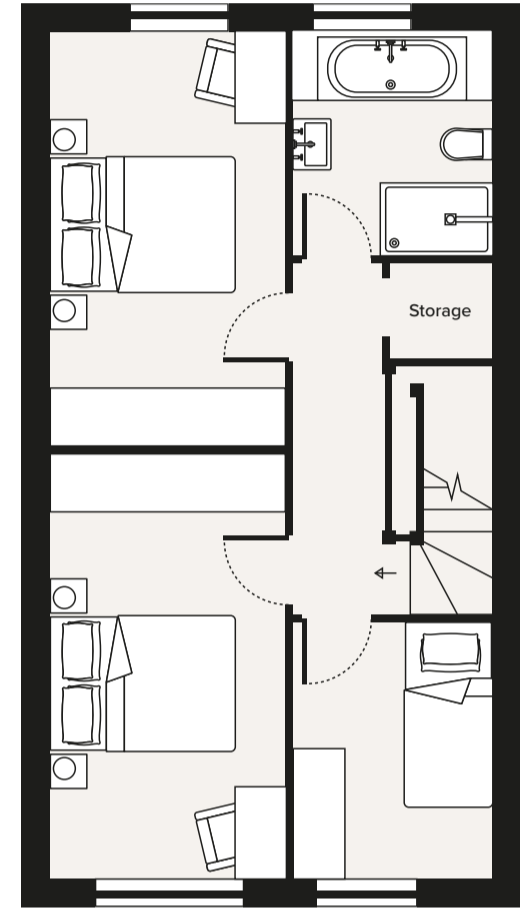
### GROUND FLOOR

Garage	3.1m x 5.4m max	10' x 17'7" max
Kitchen / Dining	5.2m x 4.4m	17' x 14'4"



### FIRST FLOOR

Lounge	5.2m x 5.7m max	17' x 18'7" max
Bedroom 1	3.1m x 4.2m max	10'1" x 13'7" max
Dressing Room	2.2m x 1.5m	7'3" x 4'9"
En-Suite	2.2m x 1.3m	7'3" x 4'3"



### SECOND FLOOR

Bedroom 2	2.7m x 5m max	8'9" x 16'4" max
Bedroom 3	2.7m x 4.9m max	8'9" x 16' max
Bedroom 4	2.3m x 3m	7'5" x 9'8"
Family Bathroom	2.3m x 2.6m	7'5" x 8'5"

The information and images in this document are intended to convey the concept and vision for The Railway Court Development. They are for guidance only, may alter as work progresses and do not necessarily represent a true and accurate depiction of the finished product. House type illustrations, floor plans and other information about Haven Homes products and services is for illustrative purposes only and is subject to change without notice. All dimensions, sizes and orientations are given as a guide and are believed to be correct at the time displayed but purchasers must make their own independent checks via a surveyor or other qualified, independent source prior to entering into any contract with Haven Homes. Photographs and computer generated images and items relating to specification will change from site to site and can do so without prior notice and the final finish, materials and specification to each unit should be checked and verified prior to making a reservation and any uncertainty over specification items or finishes which are important to each purchaser should be made in writing prior to exchange of contracts. Prices indicated are Subject to Contract. The information contained in this document does not constitute an offer to enter into a contract with Haven Homes or its subsidiaries or form any part of any contract nor does it form any representation or warranty in relation to the Developer, its Employees, Agents or to The Railway Court Development or any of their related developments.