



ASKING PRICE

£1,795,000



THE DETAILS



Ballachrink Farmhouse + 5 Tourist Cottages

Ballaragh Road, Laxey

£1,795,000

call in today or visit www.blackgracecowley.com for more details

e: hello@blackgracecowley.com | w: blackgracecowley.com | t: +44 (0) 1624 645555

a: 51 Victoria Street, DOUGLAS, Isle of Man, IM1 2LD

Ballachrink Farmhouse and 5 Tourist Cottages, Ballaragh Road



Ballachrink Farmhouse and 5 Tourist Cottages, Ballaragh Road



Ballachrink Farmhouse and 5 Tourist Cottages, Ballaragh Road



Ballachrink Farmhouse and 5 Tourist Cottages, Ballaragh Road



Ballachrink Farmhouse and 5 Tourist Cottages, Ballaragh Road



Ballachrink Farmhouse and 5 Tourist Cottages, Ballaragh Road





PROPERTY DETAILS FOR

Ballachrink Farmhouse and 5 Tourist Cottages, Ballaragh Road

THE DESCRIPTION

Ballachrink Farmhouse and 5 Holiday Cottages

- Ground floor: Large open plan Kitchen/Dining Room, Lounge, Conservatory, Shower Room, 2 Bedrooms (1 currently used as as Snug)
- 1st floor: 3 Double Bedrooms, (2 En suite), Family Bathroom, separate WC
- **Cherry Cottage** – Open plan Lounge/Dining Room, Bathroom, 2 Double Bedrooms
- **Primrose Cottage** – Duplex – Open Plan Lounge/Dining Room, Bathroom, 2 Double Bedrooms
- **Fuchsia Cottage** – Duplex – Open Plan Lounge/Dining Room, Bathroom, 1 Double Bedroom
- **Holly Cottage** – Open Plan Lounge/Dining Room, Bathroom, 2 Bedrooms (1 Twin/1 Double)
- **Dolls House** – Open Plan Lounge/Dining Room, 1 Ensuite Bedroom

THE PROPERTY

Set in 5 acres. There is a lovely, raised seating area at the top of the garden, providing the perfect relaxing place for barbequing and taking in the breath-taking sea views to the East and South East, there is a large garage (for up to 3 cars) and a paved parking area.

For more photos please visit the current website: www.iomcottages.im/ (<https://www.iomcottages.im/>)

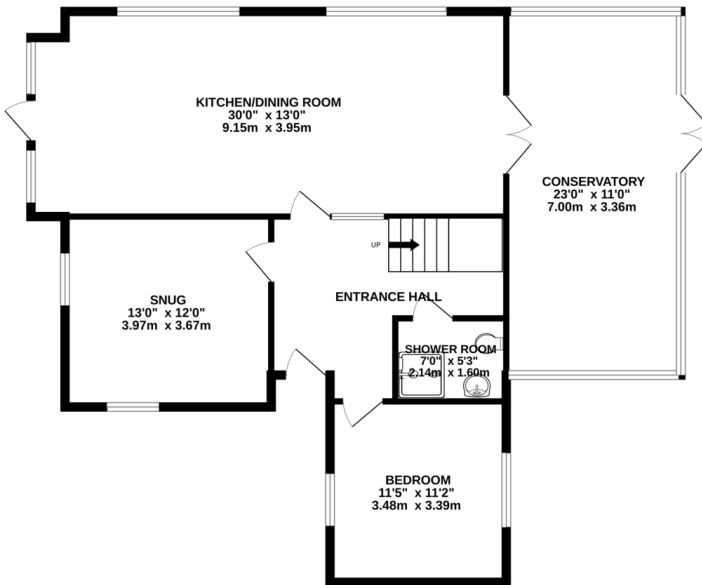
e: hello@blackgracecowley.com | w: blackgracecowley.com | t: +44 (0) 1624 645555

a: 51 Victoria Street, DOUGLAS, Isle of Man, IM1 2LD

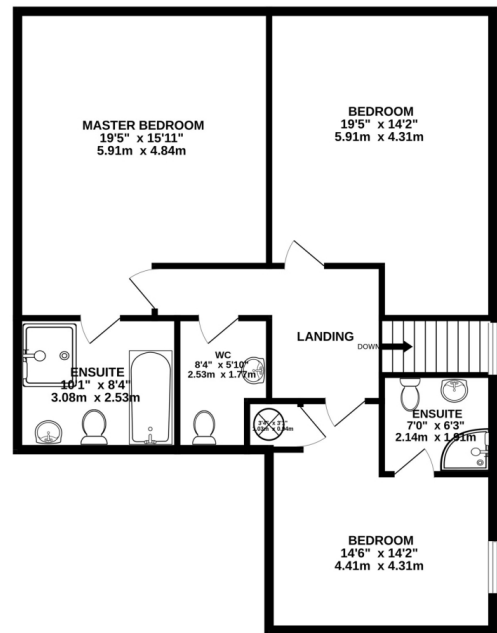
Ballachrink Farmhouse and 5 Tourist Cottages, Ballaragh Road

FLOORPLAN

GROUND FLOOR
1090 sq.ft. (101.3 sq.m.) approx.



1ST FLOOR
993 sq.ft. (92.3 sq.m.) approx.



TOTAL FLOOR AREA : 2083 sq.ft. (193.6 sq.m.) approx.

Whilst every attempt has been made to ensure the accuracy of the floorplan contained here, measurements of doors, windows, rooms and any other items are approximate and no responsibility is taken for any error, omission or mis-statement. This plan is for illustrative purposes only and should be used as such by any prospective purchaser. The services, systems and appliances shown have not been tested and no guarantee as to their operability or efficiency can be given.
Made with Metropix ©2023



PROPERTY DETAILS FOR

Ballachrink Farmhouse and 5 Tourist Cottages, Ballaragh Road

Disclaimer

These particulars are for information purposes only and do not constitute or form any contract nor should any statement contained herein be relied upon as a representation of fact.

Neither the vendor nor Black Grace Cowley (the firm), nor any officer or employee of the firm accept liability or responsibility for any statement contained herein.

The vendor does not by these particulars, nor does the firm, nor does any officer or any employee of the firm have any authority to make or give any representation or warranty whatsoever as regards the property or otherwise. It is the sole responsibility of any person interested in the property described in these particulars to make all proper enquiries and searches to verify the description of the property and all other particulars herein.

e: hello@blackgracecowley.com | **w:** blackgracecowley.com | **t:** +44 (0) 1624 645555

a: 51 Victoria Street, DOUGLAS, Isle of Man, IM1 2LD