



ASKING PRICE

£149,950

## THE DETAILS



2



2



1



## Apartment 2

### Corner House, 17 Douglas Street, Peel

### £149,950

call in today or visit [www.blackgracecowley.com](http://www.blackgracecowley.com) for more details

e: [peel@blackgracecowley.com](mailto:peel@blackgracecowley.com) | w: [blackgracecowley.com](http://blackgracecowley.com) | t: +44 (0) 1624 845 696

a: 9 Atholl Place, PEEL, Isle of Man, IM5 1HE







PROPERTY DETAILS FOR

## Apartment 2, Corner House, 17 Douglas Street, Peel

### THE DESCRIPTION

- Well presented first floor apartment in the centre of Peel
- Conveniently situated and within walking distance of shops and local amenities
- Hall, Lounge/Diner, Kitchen
- 2 Bedrooms, En-suite and Bathroom
- Decked Terrace
- Gas fired central heating

### THE PROPERTY

Black Grace Cowley are pleased to offer this well presented first floor apartment in the centre of Peel. Located on a short distance from the shops, local amenities and bus route and a short drive to Douglas, Ramsey and the South of the island. The apartment is situated in a small development comprising of only four apartments.

Accessed off Douglas Street you are welcomed into the communal hallway with stairs to all floors. The accommodation briefly comprises of a hallway, triple aspect lounge/diner, kitchen, two bedrooms, en-suite shower room and bathroom. A decked terrace can be access off the main bedroom with views towards Peel Hill.

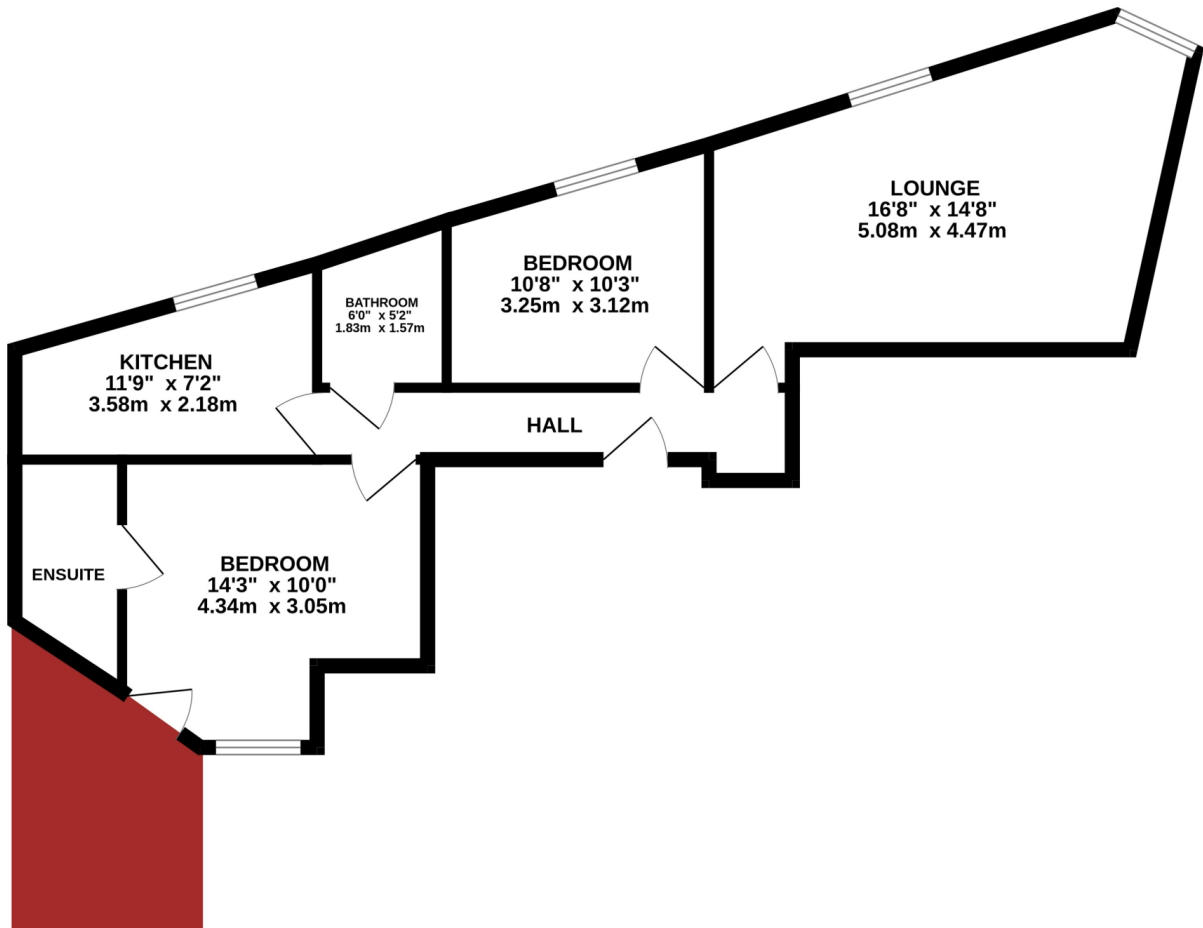
Active management company in place. Service charge approximately £996.00 per annum. Gas fired central heating.

**e:** [peel@blackgracecowley.com](mailto:peel@blackgracecowley.com) | **w:** [blackgracecowley.com](http://blackgracecowley.com) | **t:** +44 (0) 1624 845 696

**a:** 9 Atholl Place, PEEL, Isle of Man, IM5 1HE

## FLOORPLAN

GROUND FLOOR  
576 sq.ft. (53.6 sq.m.) approx.



TOTAL FLOOR AREA : 576 sq.ft. (53.6 sq.m.) approx.

Whilst every attempt has been made to ensure the accuracy of the floorplan contained here, measurements of doors, windows, rooms and any other items are approximate and no responsibility is taken for any error, omission or mis-statement. This plan is for illustrative purposes only and should be used as such by any prospective purchaser. The services, systems and appliances shown have not been tested and no guarantee as to their operability or efficiency can be given.  
Made with Metropix ©2023



PROPERTY DETAILS FOR

# Apartment 2, Corner House, 17 Douglas Street, Peel

## Disclaimer

These particulars are for information purposes only and do not constitute or form any contract nor should any statement contained herein be relied upon as a representation of fact.

Neither the vendor nor Black Grace Cowley (the firm), nor any officer or employee of the firm accept liability or responsibility for any statement contained herein.

The vendor does not by these particulars, nor does the firm, nor does any officer or any employee of the firm have any authority to make or give any representation or warranty whatsoever as regards the property or otherwise. It is the sole responsibility of any person interested in the property described in these particulars to make all proper enquiries and searches to verify the description of the property and all other particulars herein.

**e:** [peel@blackgracecowley.com](mailto:peel@blackgracecowley.com) | **w:** [blackgracecowley.com](http://blackgracecowley.com) | **t:** +44 (0) 1624 845 696

**a:** 9 Atholl Place, PEEL, Isle of Man, IM5 1HE