



ASKING PRICE

£775,000



THE DETAILS



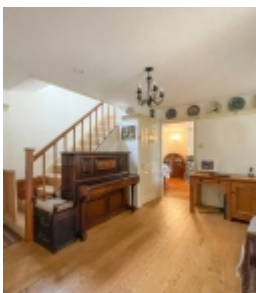
5



2



4



Glen Moar House

Sulby Glen

£775,000

call in today or visit www.blackgracecowley.com for more details

e: hello@blackgracecowley.com | w: blackgracecowley.com | t: +44 (0) 1624 645555

a: 51 Victoria Street, DOUGLAS, Isle of Man, IM1 2LD

PROPERTY DETAILS FOR
Glen Moar House, Sulby Glen



PROPERTY DETAILS FOR
Glen Moar House, Sulby Glen



PROPERTY DETAILS FOR
Glen Moar House, Sulby Glen



PROPERTY DETAILS FOR
Glen Moar House, Sulby Glen



PROPERTY DETAILS FOR
Glen Moar House, Sulby Glen



e: hello@blackgracecowley.com | w: blackgracecowley.com | t: +44 (0) 1624 645555

a: 51 Victoria Street, DOUGLAS, Isle of Man, IM1 2LD

PROPERTY DETAILS FOR
Glen Moar House, Sulby Glen



Glen Moar House, Sulby Glen





PROPERTY DETAILS FOR

Glen Moar House, Sulby Glen

THE DESCRIPTION

- Detached home with spacious family orientated accommodation in the centre of Sulby
- Sought after, leafy village location close to local amenities
- Within easy reach of Ramsey, the principle town in the north of the Island
- Mature private plot of approximately 2 acres to include front and rear lawns and a separate 1 acre paddock
- 4 Reception Rooms, modern Kitchen, Utility Room, & superb sizeable Double Garage
- 4 double Bedrooms, 1 single Bedroom, En Suite and Family Bathroom
- Gated entrance leading to the block paved driveway which provides extensive parking
- Home Office/Studio and Stables
- Oil-fired central heating, LPG gas supply, timber double glazing

THE PROPERTY

Black Grace Cowley are pleased to offer this detached home with spacious family orientated accommodation in the centre of Sulby. Sought after, leafy Village location within a few minutes' walk to Primary School, Pub and Village shop but within easy reach of Ramsey, the principle town in the north of the Island. Impressive timber entrance gates, sweeping block paved driveway with extensive parking. Standing proudly in a mature private plot of approximately 2 acres to include front and rear lawns and a separate 1 acre paddock, Stable block (3 x loose boxes), Hay Store, and wood sheds.

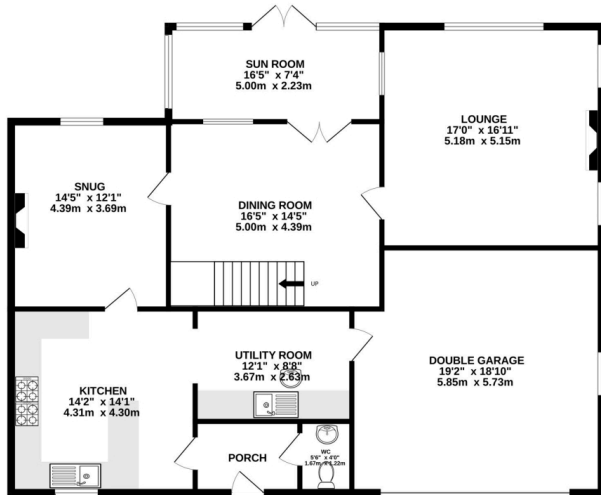
The accommodation comprises of 4 Reception Rooms, Modern Kitchen and Utility room. On the first floor, 4 double Bedrooms (Master Bedroom complemented with en suite Shower Room), single Bedroom, Family Bathroom and separate WC. Superb sizeable Double garage. Oil-fired central heating, LPG gas supply and timber double glazing. Detached, dedicated Home Studio building, fully fitted, with underfloor heating, uPVC double glazing, and fully plumbed.

e: hello@blackgracecowley.com | **w:** blackgracecowley.com | **t:** +44 (0) 1624 645555

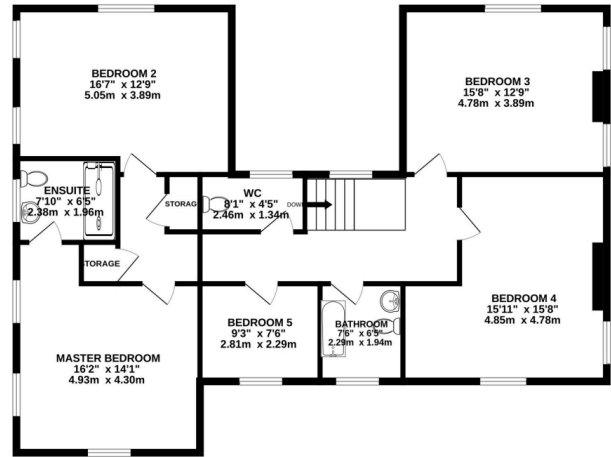
a: 51 Victoria Street, DOUGLAS, Isle of Man, IM1 2LD

FLOORPLAN

GROUND FLOOR
1529 sq.ft. (142.0 sq.m.) approx.



1ST FLOOR
1203 sq.ft. (111.7 sq.m.) approx.



TOTAL FLOOR AREA : 2732 sq.ft. (253.8 sq.m.) approx.

Whilst every attempt has been made to ensure the accuracy of the floorplan contained here, measurements of doors, windows, rooms and any other items are approximate and no responsibility is taken for any error, omission or mis-statement. This plan is for illustrative purposes only and should be used as such by any prospective purchaser. The services, systems and appliances shown have not been tested and no guarantee as to their operability or efficiency can be given.
Made with Metropix ©2023



PROPERTY DETAILS FOR

Glen Moar House, Sulby Glen

Disclaimer

These particulars are for information purposes only and do not constitute or form any contract nor should any statement contained herein be relied upon as a representation of fact.

Neither the vendor nor Black Grace Cowley (the firm), nor any officer or employee of the firm accept liability or responsibility for any statement contained herein.

The vendor does not by these particulars, nor does the firm, nor does any officer or any employee of the firm have any authority to make or give any representation or warranty whatsoever as regards the property or otherwise. It is the sole responsibility of any person interested in the property described in these particulars to make all proper enquiries and searches to verify the description of the property and all other particulars herein.

e: hello@blackgracecowley.com | **w:** blackgracecowley.com | **t:** +44 (0) 1624 645555

a: 51 Victoria Street, DOUGLAS, Isle of Man, IM1 2LD