



ASKING PRICE

£139,950



## THE DETAILS



2



1



1



Flat 3, 36 Castlemona Avenue

Douglas

£139,950

call in today or visit [www.blackgracecowley.com](http://www.blackgracecowley.com) for more details

e: [hello@blackgracecowley.com](mailto:hello@blackgracecowley.com) | w: [blackgracecowley.com](http://blackgracecowley.com) | t: +44 (0) 1624 645555

a: 51 Victoria Street, DOUGLAS, Isle of Man, IM1 2LD





# Apartment 3, 36 Castlemona Avenue, Douglas





PROPERTY DETAILS FOR

## Apartment 3, 36 Castlemona Avenue, Douglas

### THE DESCRIPTION

- Spacious 1st floor converted apartment
- Cul de sac location within walking distance of Douglas Beach and centre
- Ideal for a First Time Buyer
- Intercom Entry System
- Large open plan bay fronted Living/Dining Kitchen
- 2 Bedrooms (second Bedroom ideal as a Study)
- Modern Bathroom with bath and corner shower cubicle
- uPVC double glazing throughout and Gas fired central heating
- Sold with no onward chain

### THE PROPERTY

Black Grace Cowley are pleased to be able to offer Apartment 3, 36 Castlemona Avenue to the market. The property is situated on the first floor of a semi detached period block, upon entering the communal areas take the staircase up to the first floor landing where apartment 3 is on the right hand side.

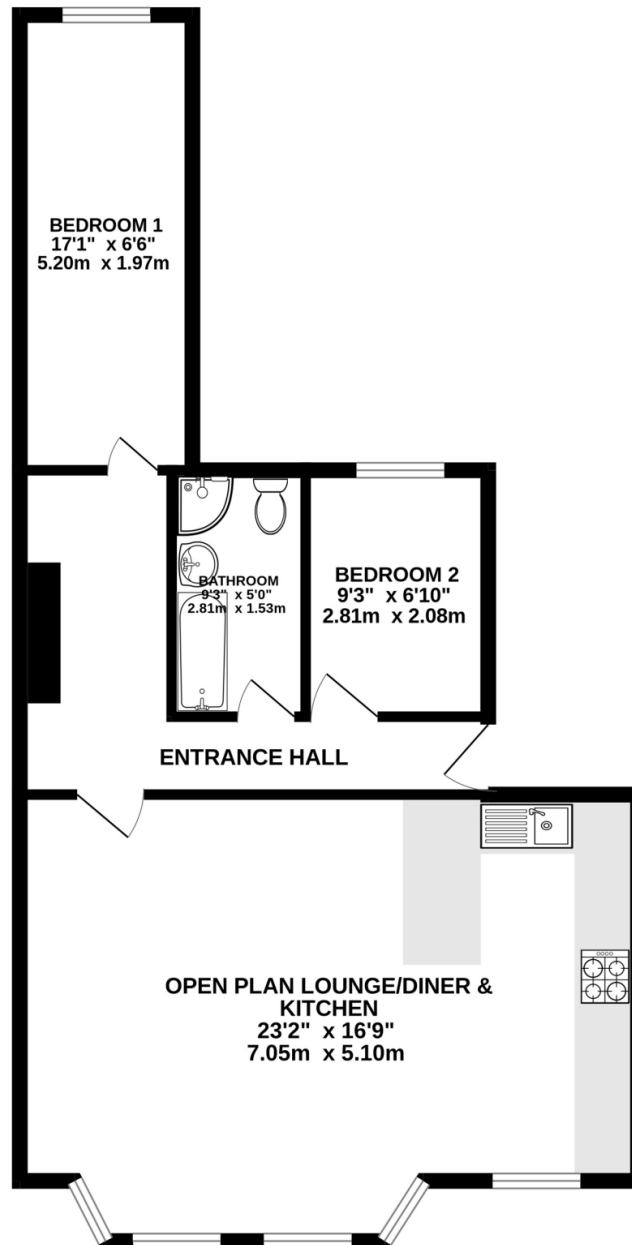
Upon entering the apartment there is a carpeted Hallway off which is a large open plan bay fronted Lounge Diner with modern fitted Kitchen at the far end and uPVC double glazed windows to the front and wooden floor throughout. The Kitchen is fitted with a range of white gloss wall and base units, granite effect laminate work tops and integrated appliances. Also off the Hallway there is a Bathroom and two Bedrooms, the larger of which is to the rear of the property. Recently modernised Bathroom with panelled bath, corner shower cubicle, wash hand basin and W.C. with fully tiled walls and floor.

**e:** [hello@blackgracecowley.com](mailto:hello@blackgracecowley.com) | **w:** [blackgracecowley.com](http://blackgracecowley.com) | **t:** +44 (0) 1624 645555

**a:** 51 Victoria Street, DOUGLAS, Isle of Man, IM1 2LD

## FLOORPLAN

GROUND FLOOR  
678 sq.ft. (63.0 sq.m.) approx.



TOTAL FLOOR AREA : 678 sq.ft. (63.0 sq.m.) approx.

Whilst every attempt has been made to ensure the accuracy of the floorplan contained here, measurements of doors, windows, rooms and any other items are approximate and no responsibility is taken for any error, omission or mis-statement. This plan is for illustrative purposes only and should be used as such by any prospective purchaser. The services, systems and appliances shown have not been tested and no guarantee as to their operability or efficiency can be given.  
Made with Metropix ©2024



PROPERTY DETAILS FOR

# Apartment 3, 36 Castlemona Avenue, Douglas

## Disclaimer

These particulars are for information purposes only and do not constitute or form any contract nor should any statement contained herein be relied upon as a representation of fact.

Neither the vendor nor Black Grace Cowley (the firm), nor any officer or employee of the firm accept liability or responsibility for any statement contained herein.

The vendor does not by these particulars, nor does the firm, nor does any officer or any employee of the firm have any authority to make or give any representation or warranty whatsoever as regards the property or otherwise. It is the sole responsibility of any person interested in the property described in these particulars to make all proper enquiries and searches to verify the description of the property and all other particulars herein.

**e:** [hello@blackgracecowley.com](mailto:hello@blackgracecowley.com) | **w:** [blackgracecowley.com](http://blackgracecowley.com) | **t:** +44 (0) 1624 645555

**a:** 51 Victoria Street, DOUGLAS, Isle of Man, IM1 2LD