

TO LET

OFFICE SPACE - £14,000 pa excl. NO VAT – Approximately 550 sq ft.

Old Granite House, Bridge Road, Ballasalla



- **NO VAT ON RENT**
- Fabulous single occupancy, office building comprising of a reception entrance hall and four separate offices over two floors.
- Modern kitchen and separate ladies and gents WC's.
- Short distance from Ronaldsway Airport and only 15 minutes from Douglas.
- Onsite parking for three vehicles included in the rent.
- Available from 1st March 2024 or sooner by agreement with existing tenant.

Over/...

DESCRIPTION

An opportunity to take a new lease on this charming converted office premises located in Ballasalla, a short distance from Ronaldsway Airport and only 15 minutes from Douglas. The premises offer approximately 550 sq ft of office accommodation comprising of four separate offices over two floors, entrance/reception area, communal kitchen and separate ladies and gents WC facilities. There is also a fire precautions system installed and onsite parking for 3 vehicles.

LOCATION

Travelling from Douglas on the New Castletown Road, continue into Ballasalla in the direction of Ronaldsway Airport. At the Whitestone roundabout turn right into Ballasalla and continue past the Malew Commissioners Offices. Opposite the Chinese Restaurant turn left onto Bridge Road and the premises can be found on the left hand side.

ACCOMMODATION

Ground Floor:

- Entrance vestibule & front porch.
- Office 1 – approx. 146 sq ft.
- Office 2 – approx. 114 sq ft.
- Kitchen – approx. 42 sq ft.
- Understairs storage cupboard.

First Floor:

- Office 3 – approx. 139 sq ft.
- Office 4 – L-shaped office approx. 107 sq ft.
- Ladies and Gents WC's
- Storage cupboard.

REPAIRING OBLIGATIONS

The premises are available on internal repairing and insuring terms. Rates, Building Insurance and Waste disposal charges in addition.

RENT REVIEWS

Standard three yearly upward only rent reviews.

DIRECTOR'S GUARANTEE/DEPOSIT

A Director's guarantee will be required if the lease is being taken in the name of a Limited Company. A 3 month rental deposit will be payable upon signing of the lease and will be returnable upon satisfactory expiry of the lease.

SERVICES

Mains services are installed. Oil fired central heating.

TENURE

Vacant possession on completion of legal formalities.

LEGAL FEES

Each party to pay their own legal fees.

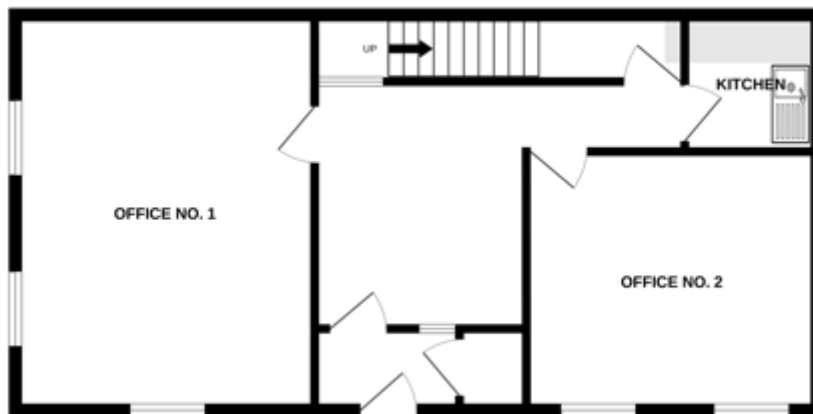
VIEWING

Strictly by appointment through **Black Grace Cowley**.

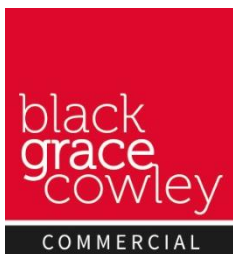
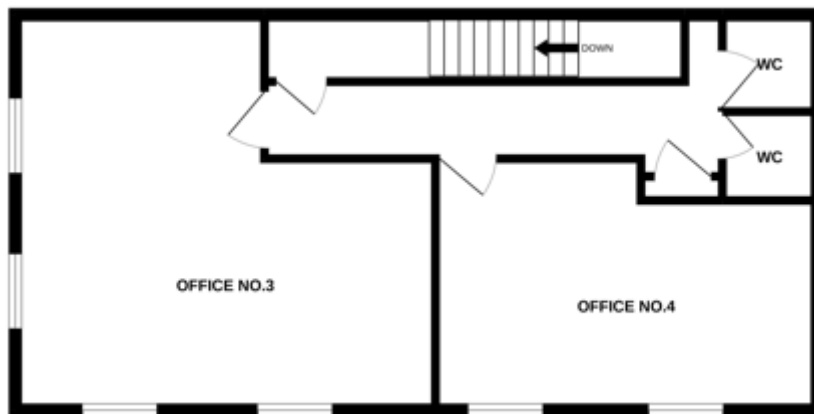




GROUND FLOOR



FIRST FLOOR



Sharon Gelling
Commercial Department
01624 645550
sharon@blackgracecowley.com

Ben Quayle
Commercial Department
01624 645550
ben@blackgracecowley.com

Black Grace Cowley Limited

Details of Black Grace Cowley can be viewed on our website blackgracecowley.com

This document is for general informative purposes only. The information in it is believed to be correct, but no express or implied representation or warranty is made by Black Grace Cowley as to its accuracy or completeness, and the opinions in it constitute our judgement as of this date but are subject to change. Reliance should not be placed upon the information, forecasts and opinions set out herein for the purpose of any particular transaction, and no responsibility or liability, whether in negligence or otherwise, is accepted by Lambert Smith Hampton or by any of its directors, officers, employees, agents or representatives for any direct, indirect or consequential loss or damage which may result from any such reliance or other use thereof. All rights reserved. No part of this publication may be transmitted or reproduced in any material form by any means, electronic, recording, mechanical, photocopying or otherwise, or stored in any information storage or retrieval system of any nature, without the prior written permission of the copyright holder, except in accordance with the provisions of the Copyright Designs and Patents Act 1988. Warning: the doing of an unauthorised act in relation to a copyright work may result in both a civil claim for damages and criminal prosecution.