



ASKING PRICE

£339,995



THE DETAILS



3



1



1



47 Lhon Vane Close

Onchan

£339,995

call in today or visit www.blackgracecowley.com for more details

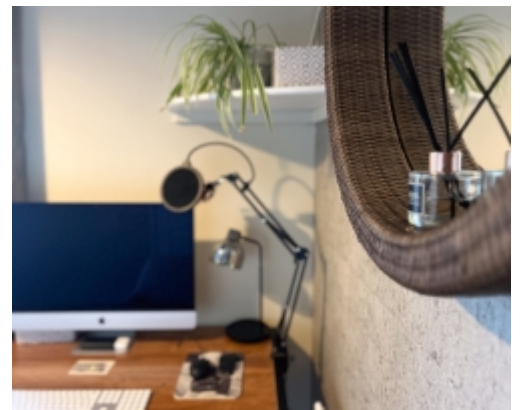
e: hello@blackgracecowley.com | w: blackgracecowley.com | t: +44 (0) 1624 645555

a: 51 Victoria Street, DOUGLAS, Isle of Man, IM1 2LD

PROPERTY DETAILS FOR
47 Lhon Vane Close, Onchan



PROPERTY DETAILS FOR
47 Lhon Vane Close, Onchan



PROPERTY DETAILS FOR
47 Lhon Vane Close, Onchan





PROPERTY DETAILS FOR

47 Lhon Vane Close, Onchan

THE DESCRIPTION

- Recently modernised Semi Detached Home
- Situated in a quiet cul-de-sac in Onchan
- Open plan Kitchen/Diner, Lounge
- 3 Bedrooms, Family Bathroom
- Garage, off road parking for 2 cars
- Front and rear mature gardens
- New roof, fascias and soffits

THE PROPERTY

Black Grace Cowley are delighted to offer this 3-bedroom semi-detached home with integral garage, situated in a quiet cul-de-sac in Lhon Vane, Onchan. The property benefits from a mature front garden and a block-paved driveway for up to 2 vehicles. The accommodation briefly comprises Entrance Porch leading to the Lounge, spacious Kitchen Diner, with access to the rear garden, and on to the rear Utility Room. On the first floor there is access to the fully boarded loft, two generous double Bedrooms and a single Bedroom with distant sea views from the rear. The Family Bathroom features a fitted panelled bath, corner shower, wash hand basin and W.C.

At the front of the property is a driveway providing off road parking for two cars and a single Garage with boarded loft space. A gate provides side access to the rear private, mature, garden with fenced borders.

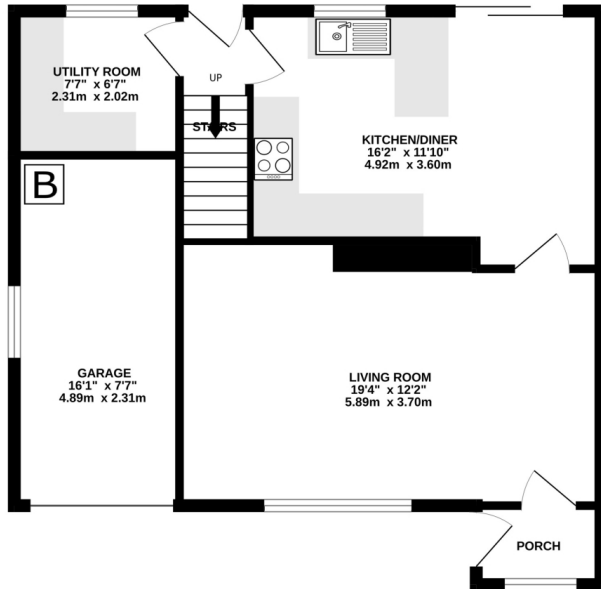
The property benefits from a new roof, fascias and soffits.

e: hello@blackgracecowley.com | **w:** blackgracecowley.com | **t:** +44 (0) 1624 645555

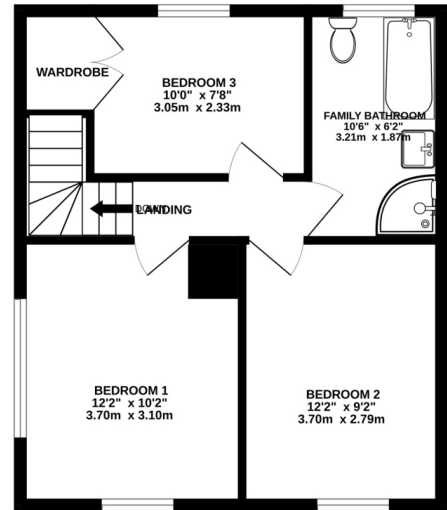
a: 51 Victoria Street, DOUGLAS, Isle of Man, IM1 2LD

FLOORPLAN

GROUND FLOOR
623 sq.ft. (57.8 sq.m.) approx.



1ST FLOOR
432 sq.ft. (40.2 sq.m.) approx.



TOTAL FLOOR AREA : 1055 sq.ft. (98.0 sq.m.) approx.

Whilst every attempt has been made to ensure the accuracy of the floorplan contained here, measurements of doors, windows, rooms and any other items are approximate and no responsibility is taken for any error, omission or mis-statement. This plan is for illustrative purposes only and should be used as such by any prospective purchaser. The services, systems and appliances shown have not been tested and no guarantee as to their operability or efficiency can be given.
Made with Metropix ©2024



PROPERTY DETAILS FOR

47 Lhon Vane Close, Onchan

Disclaimer

These particulars are for information purposes only and do not constitute or form any contract nor should any statement contained herein be relied upon as a representation of fact.

Neither the vendor nor Black Grace Cowley (the firm), nor any officer or employee of the firm accept liability or responsibility for any statement contained herein.

The vendor does not by these particulars, nor does the firm, nor does any officer or any employee of the firm have any authority to make or give any representation or warranty whatsoever as regards the property or otherwise. It is the sole responsibility of any person interested in the property described in these particulars to make all proper enquiries and searches to verify the description of the property and all other particulars herein.

e: hello@blackgracecowley.com | **w:** blackgracecowley.com | **t:** +44 (0) 1624 645555

a: 51 Victoria Street, DOUGLAS, Isle of Man, IM1 2LD