



ASKING PRICE

£399,950



## THE DETAILS



4



2



2



8 Mount View Road

Onchan

£399,950

call in today or visit [www.blackgracecowley.com](http://www.blackgracecowley.com) for more details

e: [hello@blackgracecowley.com](mailto:hello@blackgracecowley.com) | w: [blackgracecowley.com](http://blackgracecowley.com) | t: +44 (0) 1624 645555

a: 51 Victoria Street, DOUGLAS, Isle of Man, IM1 2LD

PROPERTY DETAILS FOR  
8 Mount View Road, Onchan



PROPERTY DETAILS FOR  
8 Mount View Road, Onchan



PROPERTY DETAILS FOR  
8 Mount View Road, Onchan





PROPERTY DETAILS FOR

## 8 Mount View Road, Onchan

### THE DESCRIPTION

- Detached Family Home within a sought after location in Onchan
- 4 Bedrooms, Family Bathroom, En suite Shower Room
- Lounge, Kitchen/Breakfast Room, Conservatory
- Garage, off road parking
- Gas fired central heating, uPVC double glazed throughout
- Front garden and Rear lawned garden
- No onward chain, requires modernisation throughout

### THE PROPERTY

Black Grace Cowley are pleased to offer this excellent sized detached Family Home in a sought after location in Onchan. Situated in a slightly elevated position on Mount View Road, the upper floor benefits from views to King Edward Bay golf course and distant sea views. Entrance porch into Hallway, to the left large Lounge with sliding doors onto the Conservatory overlooking the rear garden. Kitchen/Breakfast Room, potential with the space to become a Kitchen/Diner with modernisation. On the first floor, generous landing with dual aspect Master Bedroom and En suite Shower Room. 3 additional Bedrooms, 2 good sized Doubles and a Single. Modern Family Bathroom suite. Off road parking to the front and single Garage with up and over door. To the rear of the property is lawned garden with established shrubs to the borders, side footpath with gate. Gas fired central heating and uPVC double glazed throughout. Property requires modernisation throughout and is offered for sale with no onward chain. Walking distance to local primary school, Onchan amenities and bus route.

### DIRECTIONS

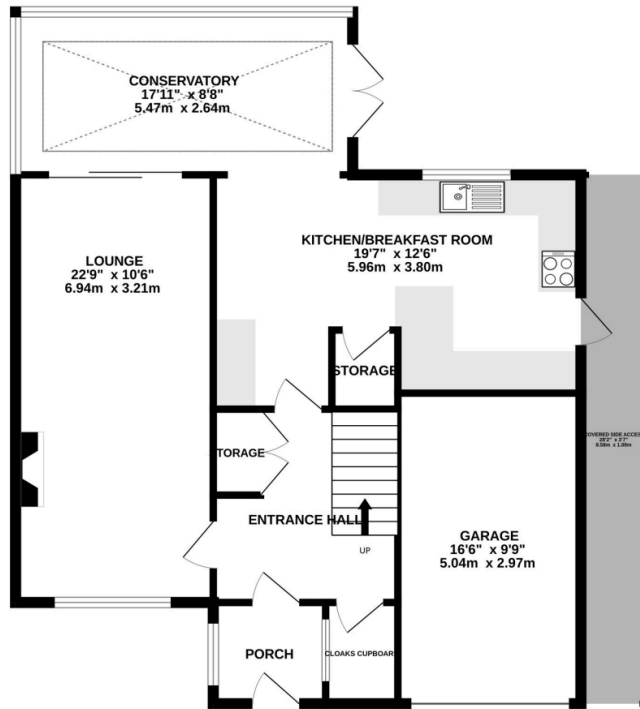
Heading from the traffic lights at the top of Bray Hill, continue straight ahead past the Grandstand on to Governors Road. Straight across both roundabouts into Onchan. Take the left turn into Wybourn Drive then the second right into Mount View Road where the property will be found a short distance along on the left, being clearly identified by the Black Grace Cowley For Sale board.

e: [hello@blackgracecowley.com](mailto:hello@blackgracecowley.com) | w: [blackgracecowley.com](http://blackgracecowley.com) | t: +44 (0) 1624 645555

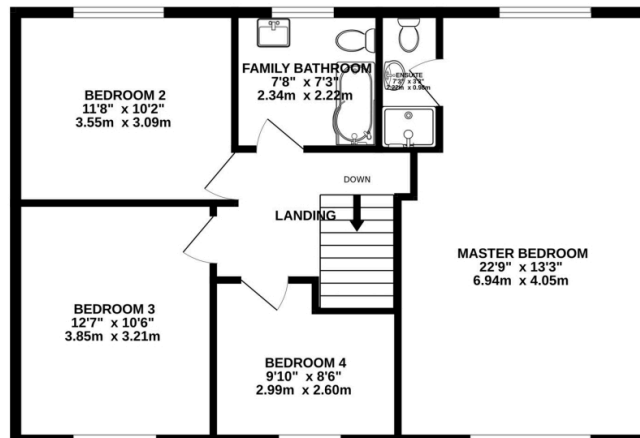
a: 51 Victoria Street, DOUGLAS, Isle of Man, IM1 2LD

# FLOORPLAN

GROUND FLOOR  
941 sq.ft. (87.4 sq.m.) approx.



1ST FLOOR  
765 sq.ft. (71.1 sq.m.) approx.



TOTAL FLOOR AREA : 1706 sq.ft. (158.5 sq.m.) approx.

Whilst every attempt has been made to ensure the accuracy of the floorplan contained here, measurements of doors, windows, rooms and any other items are approximate and no responsibility is taken for any error, omission or mis-statement. This plan is for illustrative purposes only and should be used as such by any prospective purchaser. The services, systems and appliances shown have not been tested and no guarantee as to their operability or efficiency can be given.  
Made with Metropix ©2023



PROPERTY DETAILS FOR

# 8 Mount View Road, Onchan

## Disclaimer

These particulars are for information purposes only and do not constitute or form any contract nor should any statement contained herein be relied upon as a representation of fact.

Neither the vendor nor Black Grace Cowley (the firm), nor any officer or employee of the firm accept liability or responsibility for any statement contained herein.

The vendor does not by these particulars, nor does the firm, nor does any officer or any employee of the firm have any authority to make or give any representation or warranty whatsoever as regards the property or otherwise. It is the sole responsibility of any person interested in the property described in these particulars to make all proper enquiries and searches to verify the description of the property and all other particulars herein.

**e:** [hello@blackgracecowley.com](mailto:hello@blackgracecowley.com) | **w:** [blackgracecowley.com](http://blackgracecowley.com) | **t:** +44 (0) 1624 645555

**a:** 51 Victoria Street, DOUGLAS, Isle of Man, IM1 2LD