



BAYCLIFFE

PORT ST MARY



BAYCLIFFE

- A unique opportunity to purchase a stunning lifestyle home in the south of the Island
- Incredible views across Port St. Mary Harbour, Chapel Bay and Gansey Bay
- Master bedroom suite with dressing room and en-suite bathroom
- Three additional bedrooms, four bathrooms, two reception rooms
- Modern fitted kitchen and Utility Room
- Two private balconies with superb sea and coastal views
- External Kayak store
- The property benefits from detailed planning approval to be used as registered holiday accommodation



























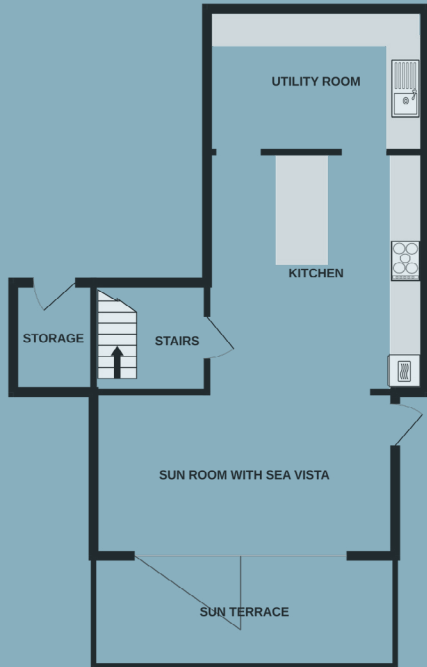




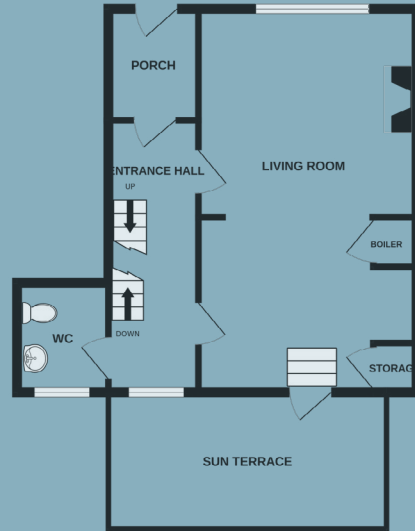




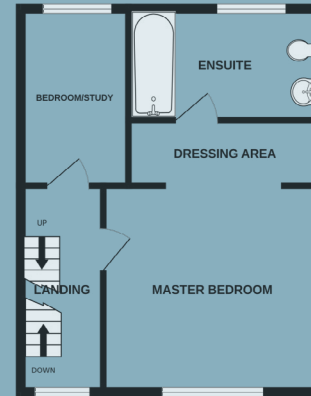
LOWER GROUND FLOOR



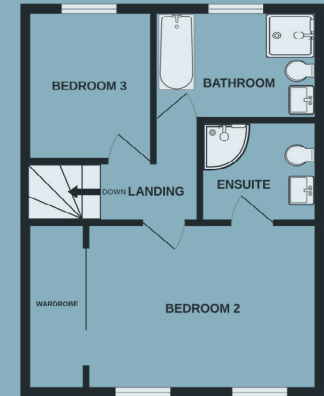
GROUND FLOOR



1ST FLOOR



2ND FLOOR



Whilst every attempt has been made to ensure the accuracy of the floorplan contained here, measurements of doors, windows, rooms and any other items are approximate and no responsibility is taken for any error, omission or mis-statement. This plan is for illustrative purposes only and should be used as such by any prospective purchaser. The services, systems and appliances shown have not been tested and no guarantee as to their operability or efficiency can be given.
Made with Metropix ©2024



VIEWING
Viewing is strictly by appointment only through the Agent.

Tel: 01624 645 555

Email: hello@blackgracecowley.com