

# FOR SALE



**INDUSTRIAL UNITS - from £165,000 + VAT - Approximately 1,000 sq ft > 1,715 sq ft**

## Block M & N, Balthane Park, Ballasalla



- Opportunity to purchase a brand-new steel frame industrial unit in Dandara's development, Balthane Park.
- Electrically operated, insulated sectional overhead door with integral pedestrian door.
- Allocated car parking for each unit.

Over/...

## DESCRIPTION

Great opportunity to purchase a brand new steel frame Industrial Unit in Dandara's development, Balthane Park (Block M & N).

## LOCATION

Balthane Park is ideally located close to Ronaldsway Airport and only 15 minutes from the centre of Douglas. Travelling into the Balthane Industrial Estate in Ballasalla, take the first left hand turn onto Ballahick Road, where the development can be found after Athol Garage on the left -hand side.

## ACCOMMODATION

### BLOCK M:

Units 94-99	1,350 sq ft	£220,000 + VAT
Unit 107	1,000 sq ft	£165,000 + VAT
Unit 108	1,700 sq ft	£275,000 + VAT

### BLOCK N:

Unit 110	1,498 sq ft	£245,000 + VAT
Units 111-114	1,350 sq ft	£220,000 + VAT
Unit 115	1,715 sq ft	£280,000 + VAT
Unit 116	1,276 sq ft	£210,000 + VAT
Units 119	1,000 sq ft	£165,000 + VAT
Units 120	1,715 sq ft	£280,000 + VAT

## RESERVATION FEE

A Reservation Fee of £1,000 + VAT is required to secure a property, which will be reserved at this fixed price for 4 weeks.

## DEPOSIT

A Deposit of 10% is required upon Exchange of Contracts with the balance payable on Completion.

## SERVICES

A mains water supply with bib tap, telecoms duct, 3 phase electrics and a capped foul drain are provided in each unit.

## TENURE

Vacant possession on completion of legal formalities.

## LEGAL FEES

Each party to pay their own legal fees.

## VIEWING

Strictly by appointment through **Black Grace Cowley**.





# SITE PLAN



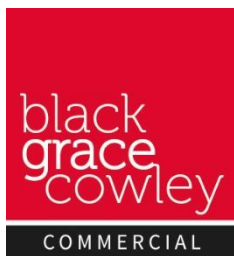
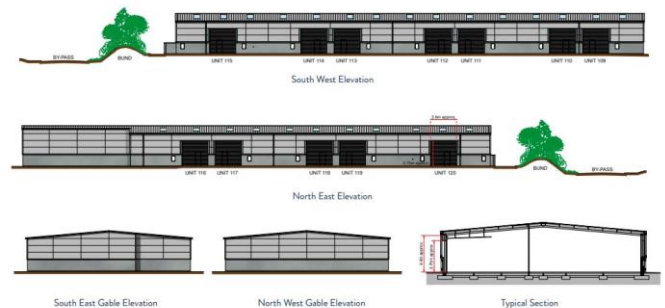
## ELEVATIONS BLOCK L



## ELEVATIONS BLOCK M



## ELEVATIONS BLOCK N



**Sharon Gelling**  
Commercial Department  
**01624 645550**  
[sharon@blackgracecowley.com](mailto:sharon@blackgracecowley.com)

**Ben Quayle**  
Commercial Department  
**01624 645550**  
[ben@blackgracecowley.com](mailto:ben@blackgracecowley.com)

### Black Grace Cowley Limited

Details of Black Grace Cowley can be viewed on our website [blackgracecowley.com](http://blackgracecowley.com)

This document is for general informative purposes only. The information in it is believed to be correct, but no express or implied representation or warranty is made by Black Grace Cowley as to its accuracy or completeness, and the opinions in it constitute our judgement as of this date but are subject to change. Reliance should not be placed upon the information, forecasts and opinions set out herein for the purpose of any particular transaction, and no responsibility or liability, whether in negligence or otherwise, is accepted by Lambert Smith Hampton or by any of its directors, officers, employees, agents or representatives for any direct, indirect or consequential loss or damage which may result from any such reliance or other use thereof. All rights reserved. No part of this publication may be transmitted or reproduced in any material form by any means, electronic, recording, mechanical, photocopying or otherwise, or stored in any information storage or retrieval system of any nature, without the prior written permission of the copyright holder, except in accordance with the provisions of the Copyright Designs and Patents Act 1988. Warning: the doing of an unauthorised act in relation to a copyright work may result in both a civil claim for damages and criminal prosecution.