



ASKING PRICE

£260,000

THE DETAILS

 2  2  3



7 Whitehouse Cottages

Kirk Michael

£260,000

call in today or visit www.blackgracecowley.com for more details

e: peel@blackgracecowley.com | w: blackgracecowley.com | t: +44 (0) 1624 845 696

a: 9 Atholl Place, PEEL, Isle of Man, IM5 1HE

7 Whitehouse Cottages, Kirk Michael



7 Whitehouse Cottages, Kirk Michael



7 Whitehouse Cottages, Kirk Michael



7 Whitehouse Cottages, Kirk Michael



7 Whitehouse Cottages, Kirk Michael

THE DESCRIPTION

- Traditional end terraced Cottage
- Situated in the picturesque village of Kirk Michael
- Lounge, Dining Room, Kitchen, Shower Room
- 2 Double Bedrooms, Study and 2nd Shower Room
- Rear Garden
- Oil fired central heating
- In need of some modernisation

THE PROPERTY

Black Grace Cowley are pleased to present 7 Whitehouse Cottages to the market. This charming end-terraced Manx stone cottage, in need of some modernisation, is situated in Kirk Michael village and within walking distance to local amenities, primary school, bus stop with countryside walks on your doorstep. Centrally located on the Island with an easy commute to Ramsey, Peel, Douglas and the airport in the South.

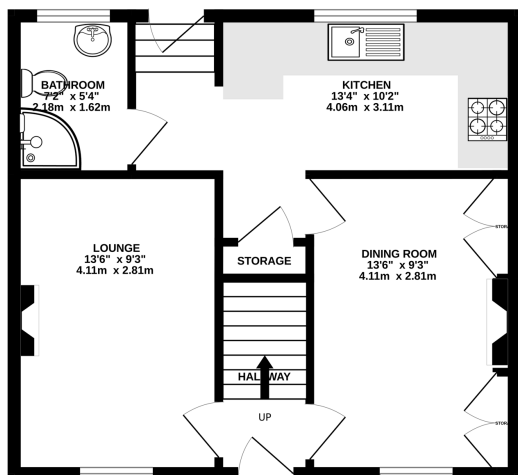
Through the front door into the hallway with stairs leading to the first floor. On the left-hand side is a cosy lounge with open fire. On the right is the dining room with open fire and traditional storage cupboards on either side of the chimney breast. Leading through a door into the rear of the cottage you will find under stairs storage, kitchen with base and wall units, space for an oven and washing machine, there is a separate shower room with sink, heated towel rail and WC. Access to the rear of the property is through a uPVC back door. Upstairs there are two double bedrooms, a study with beautiful countryside views and storage. There is a second shower room with corner shower, sink, heated towel rail and WC.

To the rear, you will find a private garden, with uninterrupted views over the countryside and farmland. The traditional 'Thie Veg' is still standing providing additional storage and character to the garden. At the front is a walled paved patio with flower beds and space to sit and watch the world famous TT races. This pretty cottage has generous side access.

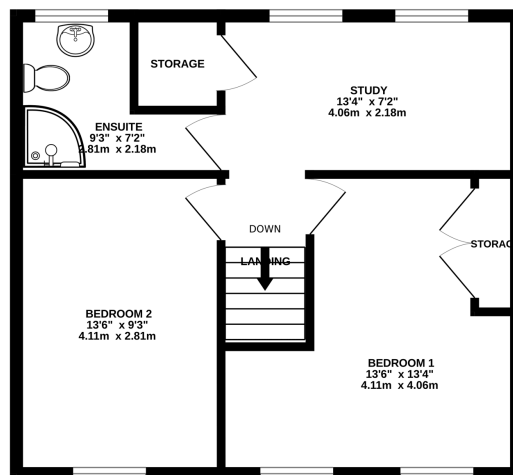
uPVC Double Glazing. Oil Central Heating.

FLOORPLAN

GROUND FLOOR
459 sq.ft. (42.6 sq.m.) approx.



1ST FLOOR
465 sq.ft. (43.2 sq.m.) approx.



TOTAL FLOOR AREA : 924 sq.ft. (85.8 sq.m.) approx.

Whilst every attempt has been made to ensure the accuracy of the floorplan contained here, measurements of doors, windows, rooms and any other items are approximate and no responsibility is taken for any error, omission or mis-statement. This plan is for illustrative purposes only and should be used as such by any prospective purchaser. The services, systems and appliances shown have not been tested and no guarantee as to their operability or efficiency can be given.
Made with Metropix ©2025



PROPERTY DETAILS FOR

7 Whitehouse Cottages, Kirk Michael

Disclaimer

These particulars are for information purposes only and do not constitute or form any contract nor should any statement contained herein be relied upon as a representation of fact.

Neither the vendor nor Black Grace Cowley (the firm), nor any officer or employee of the firm accept liability or responsibility for any statement contained herein.

The vendor does not by these particulars, nor does the firm, nor does any officer or any employee of the firm have any authority to make or give any representation or warranty whatsoever as regards the property or otherwise. It is the sole responsibility of any person interested in the property described in these particulars to make all proper enquiries and searches to verify the description of the property and all other particulars herein.

e: peel@blackgracecowley.com | **w:** blackgracecowley.com | **t:** +44 (0) 1624 845 696

a: 9 Atholl Place, PEEL, Isle of Man, IM5 1HE