



ASKING PRICE

£369,950

THE DETAILS



3



1



3



14 Hillary Close
Onchan
£369,950

call in today or visit www.blackgracecowley.com for more details

e: hello@blackgracecowley.com | w: blackgracecowley.com | t: +44 (0) 1624 645555

a: 51 Victoria Street, DOUGLAS, Isle of Man, IM1 2LD

PROPERTY DETAILS FOR
14 Hillary Close, Onchan



e: hello@blackgracecowley.com | w: blackgracecowley.com | t: +44 (0) 1624 645555

a: 51 Victoria Street, DOUGLAS, Isle of Man, IM1 2LD

PROPERTY DETAILS FOR
14 Hillary Close, Onchan



e: hello@blackgracecowley.com | w: blackgracecowley.com | t: +44 (0) 1624 645555

a: 51 Victoria Street, DOUGLAS, Isle of Man, IM1 2LD

PROPERTY DETAILS FOR
14 Hillary Close, Onchan



e: hello@blackgracecowley.com | w: blackgracecowley.com | t: +44 (0) 1624 645555

a: 51 Victoria Street, DOUGLAS, Isle of Man, IM1 2LD

PROPERTY DETAILS FOR
14 Hillary Close, Onchan



e: hello@blackgracecowley.com | w: blackgracecowley.com | t: +44 (0) 1624 645555

a: 51 Victoria Street, DOUGLAS, Isle of Man, IM1 2LD

14 Hillary Close, Onchan



THE DESCRIPTION

- Semi-Detached House situated on a large corner plot
- Quiet cul-de-sac location in Onchan
- Modern Kitchen Breakfast Room, Lounge, Dining Room and Sunroom
- 3 Bedrooms, Family Bathroom
- Private Rear Garden, Summer House
- Detached Single Garage
- Off street parking for 4+ vehicles
- Oil Fired Central Heating, uPVC double glazing throughout
- No onward chain

THE PROPERTY

Black Grace Cowley are delighted to offer 14 Hillar Close to the market. A well-presented semi-detached house situated at the end of a quiet cul-de-sac location, making for a lovely family home.

The property occupies a large corner plot with off road parking for 4-5 vehicles. The property features three generous reception rooms including a lounge, dining room and sunroom. There is a 28ft kitchen which is fitted with a range of modern white gloss base and wall units with contrasting worktops and integrated appliances. Roof light providing plenty of natural light and a uPVC double glazed door providing access to the rear garden. On the first floor are three good size bedrooms and a modern family bathroom fitted with a p-shaped bath with shower over, wash hand basin and WC.

To the rear of the property is a private garden mainly laid to lawn with a concrete seating area and timber fencing to all sides.

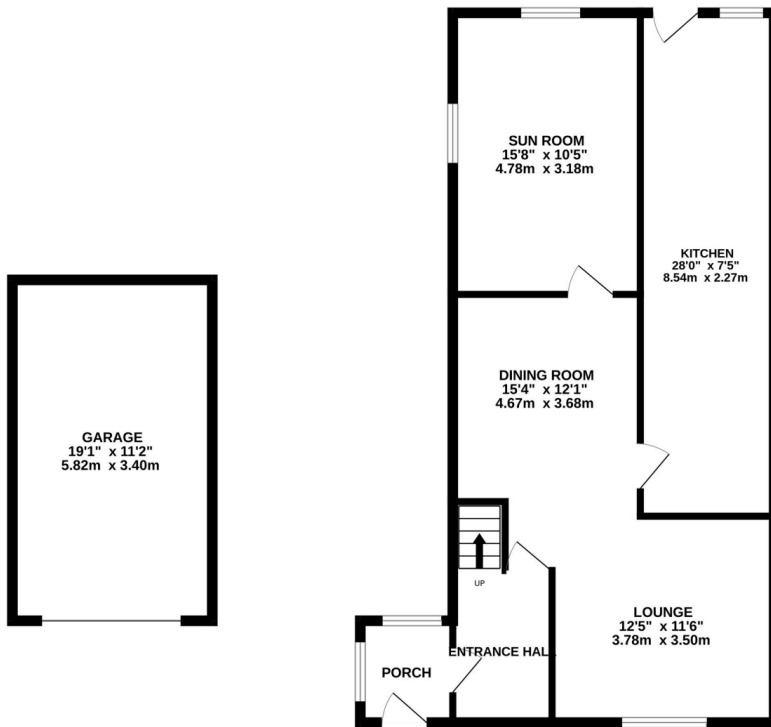
No.14 occupies a generous corner plot, with scope for extension to the side and rear, subject to planning permission.

uPVC double glazed. Oil fired central heating.

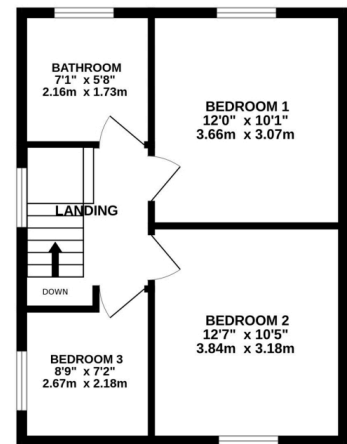
PROPERTY DETAILS FOR 14 Hillary Close, Onchan

FLOORPLAN

GROUND FLOOR
948 sq.ft. (88.0 sq.m.) approx.



1ST FLOOR
427 sq.ft. (39.6 sq.m.) approx.



TOTAL FLOOR AREA: 1374 sq.ft. (127.7 sq.m.) approx.

Whilst every attempt has been made to ensure the accuracy of the floorplan contained here, measurements of doors, windows, rooms and any other items are approximate and no responsibility is taken for any error, omission or mis-statement. This plan is for illustrative purposes only and should be used as such by any prospective purchaser. The services, systems and appliances shown have not been tested and no guarantee as to their operability or efficiency can be given.
Made with Metropix ©2025



PROPERTY DETAILS FOR

14 Hillary Close, Onchan

Disclaimer

These particulars are for information purposes only and do not constitute or form any contract nor should any statement contained herein be relied upon as a representation of fact.

Neither the vendor nor Black Grace Cowley (the firm), nor any officer or employee of the firm accept liability or responsibility for any statement contained herein.

The vendor does not by these particulars, nor does the firm, nor does any officer or any employee of the firm have any authority to make or give any representation or warranty whatsoever as regards the property or otherwise. It is the sole responsibility of any person interested in the property described in these particulars to make all proper enquiries and searches to verify the description of the property and all other particulars herein.

e: hello@blackgracecowley.com | **w:** blackgracecowley.com | **t:** +44 (0) 1624 645555

a: 51 Victoria Street, DOUGLAS, Isle of Man, IM1 2LD