



black
grace
cowley
ESTATE AGENTS

ASKING PRICE

£262,000

THE DETAILS



2



1



3



2 Premier Court

Mooragh Promenade, Ramsey

£262,000

call in today or visit www.blackgracecowley.com for more details

e: peel@blackgracecowley.com | w: blackgracecowley.com | t: +44 (0) 1624 845 696

a: 9 Atholl Place, PEEL, Isle of Man, IM5 1HE

PROPERTY DETAILS FOR
2 Premier Court, Ramsey



e: peel@blackgracecowley.com | w: blackgracecowley.com | t: +44 (0) 1624 845 696

a: 9 Atholl Place, PEEL, Isle of Man, IM5 1HE

PROPERTY DETAILS FOR
2 Premier Court, Ramsey



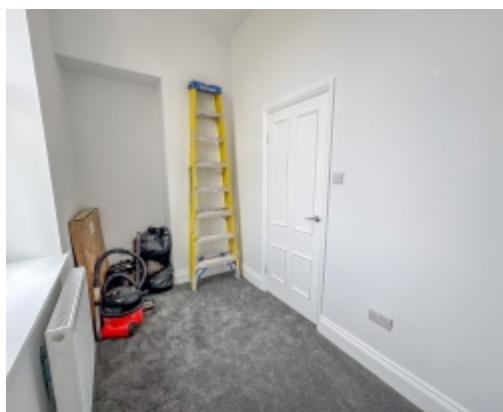
e: peel@blackgracecowley.com | w: blackgracecowley.com | t: +44 (0) 1624 845 696

a: 9 Atholl Place, PEEL, Isle of Man, IM5 1HE

PROPERTY DETAILS FOR
2 Premier Court, Ramsey



PROPERTY DETAILS FOR
2 Premier Court, Ramsey



e: peel@blackgracecowley.com | w: blackgracecowley.com | t: +44 (0) 1624 845 696

a: 9 Atholl Place, PEEL, Isle of Man, IM5 1HE

THE DESCRIPTION

- Extensively modernised and renovated 1st Floor Apartment
- Stunning seafront views across Ramsey Bay
- Lounge, Breakfast Kitchen, Dining Room, Study/Office
- Two Double Bedrooms
- Lift Access directly into the Apartment
- Gas Central Heating
- No onward chain

THE PROPERTY

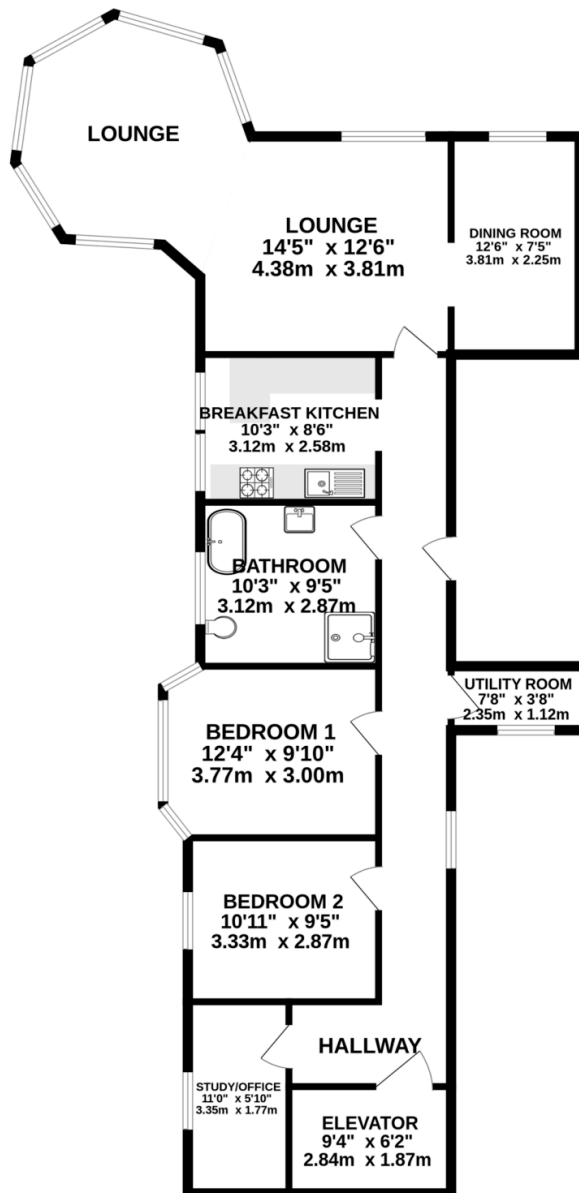
Black Grace Cowley are delighted to bring Apartment 2, Premier Court in Ramsey to the market. This first floor apartment with sea views has been fully renovated and finished to a very high standard and offers spacious accommodation with the added advantage of a lift direct to the apartment. The ceilings in this Victorian building are high and give a real sense of space with impressive views from each of the rooms. Conveniently located on Mooragh Promenade with local amenities and the town centre just a short walk away.

Accessed via a secure automated entry system, inner porch with post boxes, lift access is from a side door towards the rear of the building. Apartment 2 is situated on the first floor, door into a light and airy hall with storage cupboard and boiler/utility room. At the front is a spacious lounge with a turret shaped, panelled bay window to appreciate and enjoy the magnificent, uninterrupted sea views, an opening leads into a dining room again with sea views. Off the hallway is a modern white gloss kitchen with base and wall units, tiled splashback, integrated appliances and breakfast bar. There are two, generous double bedrooms and a study, home office or hobby room. The fully tiled bathroom recently fitted with a contemporary three piece suite comprising bath, separate shower, vanity wash hand basin, W.C. and heated towel rail.

Viewings highly recommended. Double glazed throughout gas fired central heating. Active Management Company in place – service charges including ground rent £3000.00 p.a. 2024/2025. Treasury rates £1,302.24 2024/2025.

FLOORPLAN

GROUND FLOOR
1156 sq.ft. (107.4 sq.m.) approx.



TOTAL FLOOR AREA : 1156 sq.ft. (107.4 sq.m.) approx.

Whilst every attempt has been made to ensure the accuracy of the floorplan contained here, measurements of doors, windows, rooms and any other items are approximate and no responsibility is taken for any error, omission or mis-statement. This plan is for illustrative purposes only and should be used as such by any prospective purchaser. The services, systems and appliances shown have not been tested and no guarantee as to their operability or efficiency can be given.
Made with Metropix ©2025



PROPERTY DETAILS FOR

2 Premier Court, Ramsey

Disclaimer

These particulars are for information purposes only and do not constitute or form any contract nor should any statement contained herein be relied upon as a representation of fact.

Neither the vendor nor Black Grace Cowley (the firm), nor any officer or employee of the firm accept liability or responsibility for any statement contained herein.

The vendor does not by these particulars, nor does the firm, nor does any officer or any employee of the firm have any authority to make or give any representation or warranty whatsoever as regards the property or otherwise. It is the sole responsibility of any person interested in the property described in these particulars to make all proper enquiries and searches to verify the description of the property and all other particulars herein.

e: peel@blackgracecowley.com | **w:** blackgracecowley.com | **t:** +44 (0) 1624 845 696

a: 9 Atholl Place, PEEL, Isle of Man, IM5 1HE