



ASKING PRICE

£220,000

## THE DETAILS



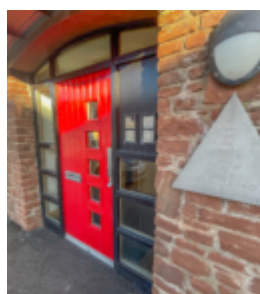
2



1



1



Apartment 3 Wharfside

Peel

£220,000

call in today or visit [www.blackgracecowley.com](http://www.blackgracecowley.com) for more details

e: [peel@blackgracecowley.com](mailto:peel@blackgracecowley.com) | w: [blackgracecowley.com](http://blackgracecowley.com) | t: +44 (0) 1624 845 696

a: 9 Atholl Place, PEEL, Isle of Man, IM5 1HE

PROPERTY DETAILS FOR  
**Apartment 3, Wharfside, Peel**



e: [peel@blackgracecowley.com](mailto:peel@blackgracecowley.com) | w: [blackgracecowley.com](http://blackgracecowley.com) | t: +44 (0) 1624 845 696

a: 9 Atholl Place, PEEL, Isle of Man, IM5 1HE



PROPERTY DETAILS FOR  
**Apartment 3, Wharfside, Peel**



e: [peel@blackgracecowley.com](mailto:peel@blackgracecowley.com) | w: [blackgracecowley.com](http://blackgracecowley.com) | t: +44 (0) 1624 845 696

a: 9 Atholl Place, PEEL, Isle of Man, IM5 1HE



PROPERTY DETAILS FOR  
**Apartment 3, Wharfside, Peel**



e: [peel@blackgracecowley.com](mailto:peel@blackgracecowley.com) | w: [blackgracecowley.com](http://blackgracecowley.com) | t: +44 (0) 1624 845 696

a: 9 Atholl Place, PEEL, Isle of Man, IM5 1HE

## Apartment 3, Wharfside, Peel



## Apartment 3, Wharfside, Peel

### THE DESCRIPTION

- Spacious Harbourside Apartment
- Situated on first floor with views towards the Marina and Peel Hill
- Ideally positioned close to restaurants, bars and local amenities
- Stairs and lift access to all floors
- Open plan Lounge/Dining Room/Modern Kitchen
- 2 double Bedrooms, Family Bathroom
- 1 parking space
- uPVC double glazing, Electric wall heaters

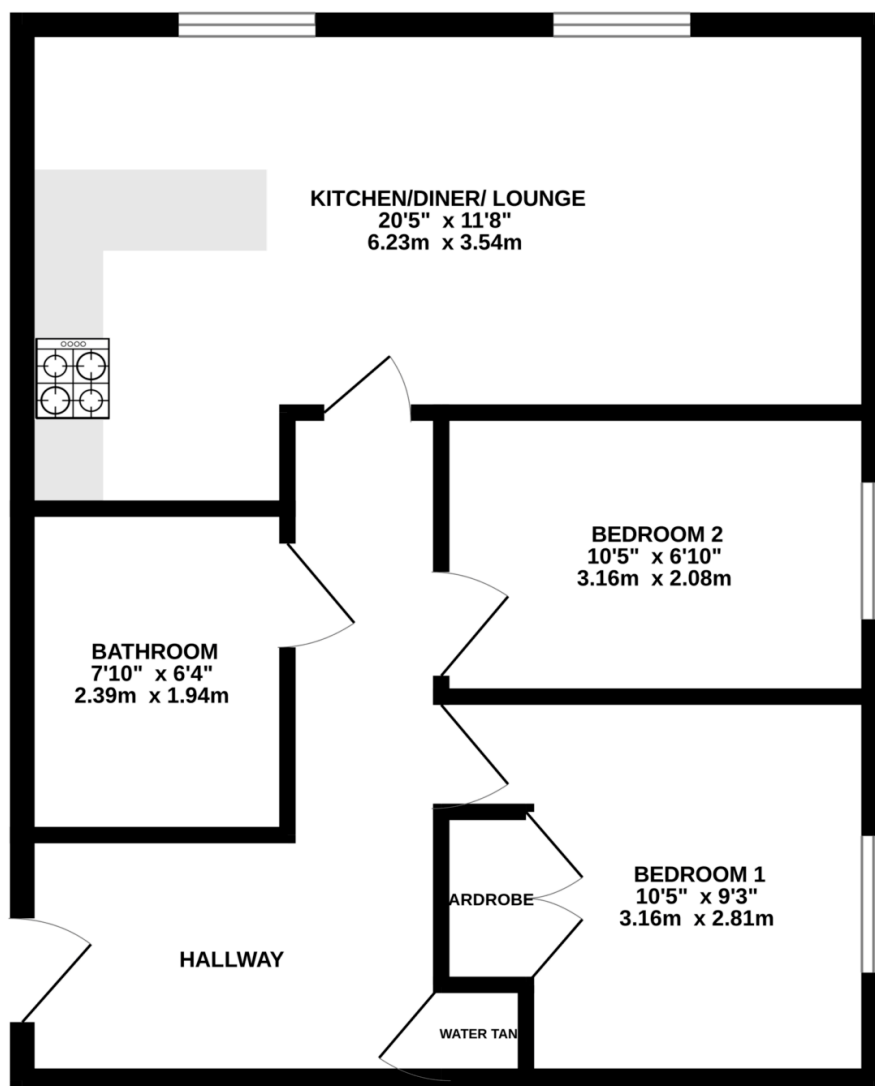
### THE PROPERTY

Black Grace Cowley are delighted to offer Apartment 3, Wharfside to the market. This purpose built apartment block has been tastefully renovated retaining some original external features from its past life as a corn merchants warehouse. Communal entrance hall with security entrance phone, lift and stair access to all floors. Private entrance into the apartment with built in storage. Open plan lounge/diner/kitchen with views towards Peel Hill, the Marina and Quayside. Modern kitchen fitted with integrated appliances and breakfast bar. Two double bedrooms one with built in wardrobes and a family bathroom.

Electric wall heater and uPVC double glazed throughout. One allocated parking space. Active Management company in place with the remainder of a 999 year lease, Management Fee £2534 per annum and rates £960.20.

## FLOORPLAN

GROUND FLOOR  
518 sq.ft. (48.2 sq.m.) approx.



TOTAL FLOOR AREA: 518 sq.ft. (48.2 sq.m.) approx.

Whilst every attempt has been made to ensure the accuracy of the floorplan contained here, measurements of doors, windows, rooms and any other items are approximate and no responsibility is taken for any error, omission or mis-statement. This plan is for illustrative purposes only and should be used as such by any prospective purchaser. The services, systems and appliances shown have not been tested and no guarantee as to their operability or efficiency can be given.  
Made with Metropix ©2025

**e:** peel@blackgracecowley.com | **w:** blackgracecowley.com | **t:** +44 (0) 1624 845 696

**a:** 9 Atholl Place, PEEL, Isle of Man, IM5 1HE



PROPERTY DETAILS FOR

## Apartment 3, Wharfside, Peel

### Disclaimer

These particulars are for information purposes only and do not constitute or form any contract nor should any statement contained herein be relied upon as a representation of fact.

Neither the vendor nor Black Grace Cowley (the firm), nor any officer or employee of the firm accept liability or responsibility for any statement contained herein.

The vendor does not by these particulars, nor does the firm, nor does any officer or any employee of the firm have any authority to make or give any representation or warranty whatsoever as regards the property or otherwise. It is the sole responsibility of any person interested in the property described in these particulars to make all proper enquiries and searches to verify the description of the property and all other particulars herein.

**e:** [peel@blackgracecowley.com](mailto:peel@blackgracecowley.com) | **w:** [blackgracecowley.com](https://blackgracecowley.com) | **t:** +44 (0) 1624 845 696

**a:** 9 Atholl Place, PEEL, Isle of Man, IM5 1HE