



ASKING PRICE

£399,950

THE DETAILS



4



3



2



Sea View House

Queens Promenade, Ramsey

£399,950

call in today or visit www.blackgracecowley.com for more details

e: hello@blackgracecowley.com | w: blackgracecowley.com | t: +44 (0) 1624 645555

a: 51 Victoria Street, DOUGLAS, Isle of Man, IM1 2LD

Sea View House, Queens Promenade, Ramsey



e: hello@blackgracecowley.com | w: blackgracecowley.com | t: +44 (0) 1624 645555

a: 51 Victoria Street, DOUGLAS, Isle of Man, IM1 2LD



Sea View House, Queens Promenade, Ramsey



Sea View House, Queens Promenade, Ramsey



THE DESCRIPTION

- Attractive Victorian Double Fronted Detached House with stunning sea views
- 4 Double Bedrooms, 3 Bathrooms
- 2 Reception Rooms, Family Breakfast/Kitchen
- Incredible position overlooking Ramsey bay with panoramic sea views
- Close to all local amenities and walking distance into Ramsey Town Centre
- Viewing essential

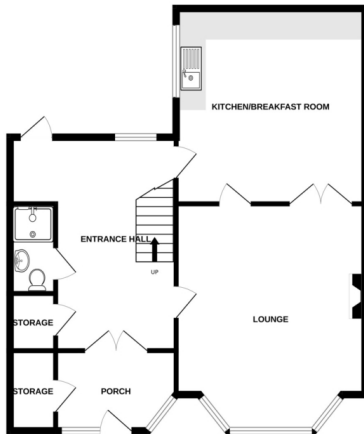
THE PROPERTY

Black Grace Cowley are delighted to offer the rare opportunity to purchase this Victorian double fronted detached house on Queens Promenade with stunning sea views.

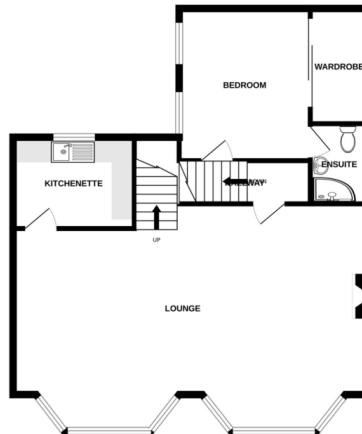
Bright Entrance Hall leads into the large lobby with plenty of fitted storage space. Shower room to the right with fitted WC, wash hand basin and wet room shower. Spacious Lounge with large bay window, high ceilings and feature log burner. Leading through to the modern Kitchen with fitted wall and base units. Stairs lead up to the first floor, spacious front Reception Room/Lounge with 2 large bay windows, fitted storage and multifuel burner. Kitchenette/Utility Room with cream base units and oak worktop. Bedroom 1 is to the rear with views to the Queens Pier, fitted wardrobe and En Suite Shower Room. On the second floor, 3 further Double Bedrooms, 2 to the front with panoramic sea views and 1 to the rear. Family Bathroom with modern suite comprising of bathtub, WC, wash hand basin and separate corner shower. Oil Fired Central Heating and uPVC Double Glazed throughout.

FLOORPLAN

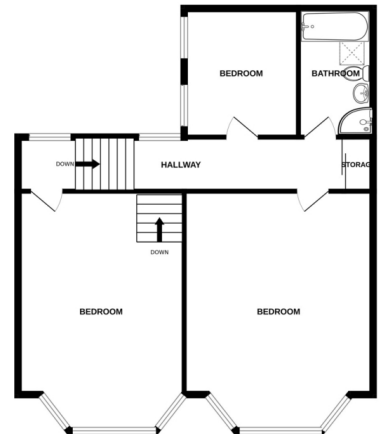
GROUND FLOOR
785 sq.ft. (73.0 sq.m.) approx.



1ST FLOOR
777 sq.ft. (72.2 sq.m.) approx.



2ND FLOOR
781 sq.ft. (72.5 sq.m.) approx.



TOTAL FLOOR AREA : 2343 sq.ft. (217.7 sq.m.) approx.

Whilst every attempt has been made to ensure the accuracy of the floorplan contained here, measurements of doors, windows, rooms and any other items are approximate and no responsibility is taken for any error, omission or mis-statement. This plan is for illustrative purposes only and should be used as such by any prospective purchaser. The services, systems and appliances shown have not been tested and no guarantee as to their operability or efficiency can be given.
Made with Metropix ©2023



PROPERTY DETAILS FOR

Sea View House, Queens Promenade, Ramsey

Disclaimer

These particulars are for information purposes only and do not constitute or form any contract nor should any statement contained herein be relied upon as a representation of fact.

Neither the vendor nor Black Grace Cowley (the firm), nor any officer or employee of the firm accept liability or responsibility for any statement contained herein.

The vendor does not by these particulars, nor does the firm, nor does any officer or any employee of the firm have any authority to make or give any representation or warranty whatsoever as regards the property or otherwise. It is the sole responsibility of any person interested in the property described in these particulars to make all proper enquiries and searches to verify the description of the property and all other particulars herein.

e: hello@blackgracecowley.com | **w:** blackgracecowley.com | **t:** +44 (0) 1624 645555

a: 51 Victoria Street, DOUGLAS, Isle of Man, IM1 2LD