



ASKING PRICE

£35,000



Lifestyle Allotment, Main Road
Greeba
£35,000

call in today or visit www.blackgracecowley.com for more details

e: peel@blackgracecowley.com | w: blackgracecowley.com | t: +44 (0) 1624 845 696

a: 9 Atholl Place, PEEL, Isle of Man, IM5 1HE





THE DESCRIPTION

- Lifestyle Allotment – a little piece of heaven
- Approximately 200 square meters
- Greenhouse, Insulated Summerhouse, Bike Store and Tool Shed
- Vegetable patches, Fruit Cage, Fruit Trees
- Mains Water
- This is not a building plot
- Sold as seen

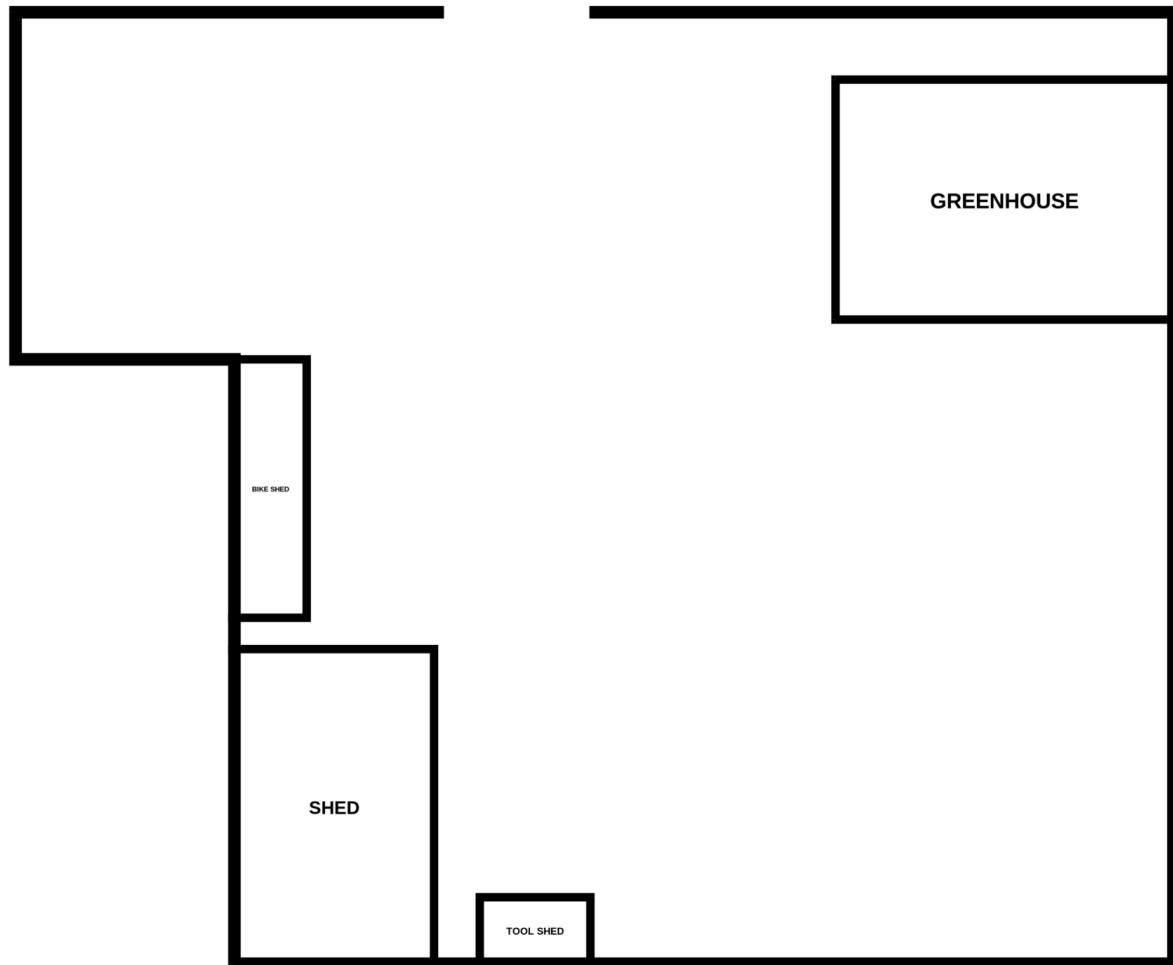
THE PROPERTY

Black Grace Cowley are pleased to offer this excellent opportunity to acquire a delightful lifestyle allotment in Greeba, your very own 'escape to the country'. Centrally located and only a 15 minute drive from Douglas and five minutes from Peel. The plot has a gated entrance and is hidden behind a dry stone wall with manicured conifers offering complete privacy and seclusion. South facing, it offers ideal growing conditions for a variety of vegetables. There are multiple raised beds that the current owners grow a selection of seasonal produce in. The Greenhouse offers additional growing opportunities for tomatoes, peppers, flowers and seedling and the fruit cage provide abundant Blueberries, Gooseberries, Raspberries, Tay and Logan berries throughout the summer together with strawberries and a beautiful eating apple tree.

There is an insulated summerhouse with a covered veranda that has been professionally wired but not connected to the main electricity supply that would benefit from solar panels or a portable power station. A bike store and a garden tool shed. Mains water. Viewings recommended.

FLOORPLAN

GROUND FLOOR
2143 sq.ft. (199.1 sq.m.) approx.



TOTAL FLOOR AREA : 2143 sq.ft. (199.1 sq.m.) approx.

Whilst every attempt has been made to ensure the accuracy of the floorplan contained here, measurements of doors, windows, rooms and any other items are approximate and no responsibility is taken for any error, omission or mis-statement. This plan is for illustrative purposes only and should be used as such by any prospective purchaser. The services, systems and appliances shown have not been tested and no guarantee as to their operability or efficiency can be given.
Made with Metropix ©2025

FLOORPLAN





PROPERTY DETAILS FOR

Lifestyle Allotment, Main Road, Greeba

Disclaimer

These particulars are for information purposes only and do not constitute or form any contract nor should any statement contained herein be relied upon as a representation of fact.

Neither the vendor nor Black Grace Cowley (the firm), nor any officer or employee of the firm accept liability or responsibility for any statement contained herein.

The vendor does not by these particulars, nor does the firm, nor does any officer or any employee of the firm have any authority to make or give any representation or warranty whatsoever as regards the property or otherwise. It is the sole responsibility of any person interested in the property described in these particulars to make all proper enquiries and searches to verify the description of the property and all other particulars herein.

e: peel@blackgracecowley.com | **w:** blackgracecowley.com | **t:** +44 (0) 1624 845 696

a: 9 Atholl Place, PEEL, Isle of Man, IM5 1HE