



ASKING PRICE

£465,000



THE DETAILS



Denizli

Booilushag, Maughold

£465,000

call in today or visit www.blackgracecowley.com for more details

e: hello@blackgracecowley.com | w: blackgracecowley.com | t: +44 (0) 1624 645555

a: 51 Victoria Street, DOUGLAS, Isle of Man, IM1 2LD

Denizli, Booilushag, Maughold, Ramsey



Denizli, Booilushag, Maughold, Ramsey



THE DESCRIPTION

- Beach fronted building plot with full planning permission for a bespoke contemporary design
- Detached modern home with render and clad design
- 3 Bedrooms, 3 Bathrooms, 3 Reception Rooms
- Kitchen Diner, Utility Room
- Garage, Off street parking for several vehicles
- Gardens stretching down to the coastline
- Terraces and landscaped grounds
- Panoramic sea views
- Situated in a private estate
- Solar panels
- Planning Ref: 19/00951/B (<https://pbc.gov.im/online-applications/applicationDetails.do?activeTab=summary&keyVal=PX9JSUIP03300>)

THE PROPERTY

Black Grace Cowley are delighted to offer Denizli to the market. This substantial plot situated on the seafront within a private estate in Maughold, is in an elevated position with a boundary that allows direct access down to Port Mooar Beach.

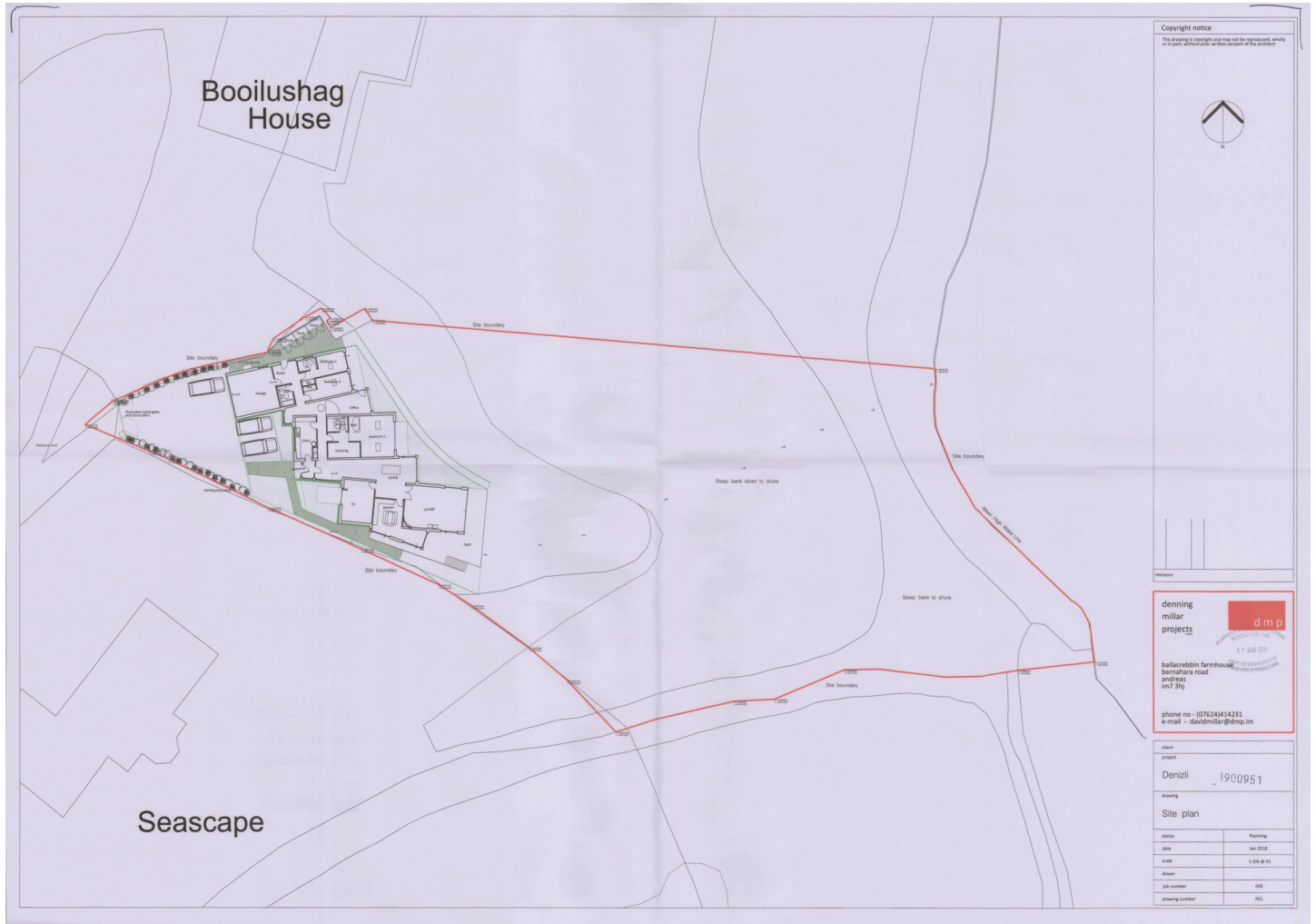
The planning permission in place accommodates a spectacular contemporary bespoke deigned home that consists of three bedrooms and three bathrooms, a snug/TV room, lounge, dining room, kitchen breakfast room, utility, office and integral garage, plus off street parking for several vehicles. Various raised and sunken terraced areas making the most of the spectacular panoramic sea views.

The gardens extend down the bank towards Port Mooar beach.

The plot is situated at the end of a cul de-sac within the Booilushag Estate in Maughold. The site, the position and the views from this unique opportunity are unrivalled. The design has a beachfront feel with a mixture of render and cladding.

The footings have already been laid, planning permission, therefore, is infinitum. Please call Black Grace Cowley if you are looking for a stunning opportunity to create your own personalised, modern, eco friendly home on the seafront in the Isle Man.

FLOORPLAN



FLOORPLAN





PROPERTY DETAILS FOR

Denizli, Booilushag, Maughold, Ramsey

Disclaimer

These particulars are for information purposes only and do not constitute or form any contract nor should any statement contained herein be relied upon as a representation of fact.

Neither the vendor nor Black Grace Cowley (the firm), nor any officer or employee of the firm accept liability or responsibility for any statement contained herein.

The vendor does not by these particulars, nor does the firm, nor does any officer or any employee of the firm have any authority to make or give any representation or warranty whatsoever as regards the property or otherwise. It is the sole responsibility of any person interested in the property described in these particulars to make all proper enquiries and searches to verify the description of the property and all other particulars herein.

e: hello@blackgracecowley.com | **w:** blackgracecowley.com | **t:** +44 (0) 1624 645555

a: 51 Victoria Street, DOUGLAS, Isle of Man, IM1 2LD