



ASKING PRICE

£249,950



## THE DETAILS



2



1



1



4 Bridge Street

Peel

£249,950

call in today or visit [www.blackgracecowley.com](http://www.blackgracecowley.com) for more details

e: [peel@blackgracecowley.com](mailto:peel@blackgracecowley.com) | w: [blackgracecowley.com](http://blackgracecowley.com) | t: +44 (0) 1624 845 696

a: 9 Atholl Place, PEEL, Isle of Man, IM5 1HE

PROPERTY DETAILS FOR  
4 Bridge Street, Peel



PROPERTY DETAILS FOR  
4 Bridge Street, Peel



PROPERTY DETAILS FOR  
**4 Bridge Street, Peel**





PROPERTY DETAILS FOR

## 4 Bridge Street, Peel

### THE DESCRIPTION

- Traditional Manx Cottage with outside space
- Situated in the heart of Old Peel, a stones throw from the 'prom', beach and close to the town centre
- Lounge, Modern Kitchen/Diner
- Two Double Bedrooms, Family Bathroom
- Good sized Astro-turfed yard with rear access
- No onward chain

### THE PROPERTY

Black Grace Cowley are pleased to present 4 Bridge Street, Peel to the market. This lovely cottage has been modernised with the advantage of outside space and rear access. Located in the heart of old Peel walking distance to the beach, promenade, bars and restaurants, local amenities and a two minute walk to the bus stop. Through the uPVC front door into the hallway with stairs leading to the first floor. On the left, a door leads into a generous and light lounge with a step up into the dining kitchen with a range of modern base and wall units, electric oven and hob, space for a washing machine and fridge/freezer. On the first floor are two bedrooms, one double at the front with built-in storage and a smaller double at the back. The modern family bathroom has a bath with shower over, vanity sink and WC.

Outside is a generous yard with a wooden double gate to the rear access so handy if you have a bike or kayak to store. The yard has been astro-turfed and provides a lovely, private outside space for garden furniture and flower pots.

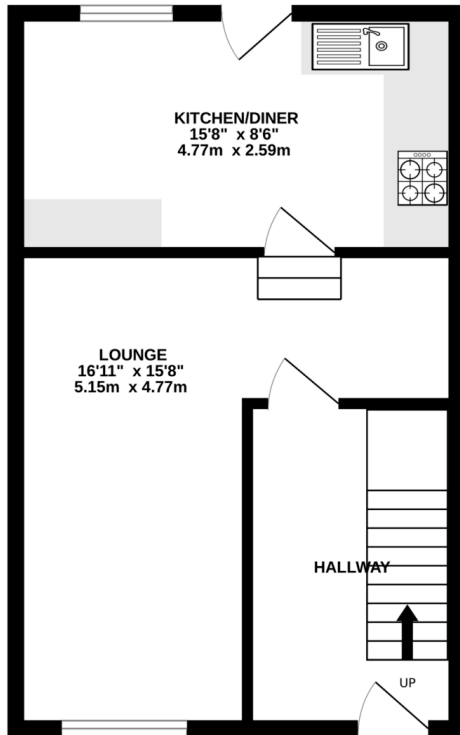
uPVC Double Glazing. Gas Central Heating (New boiler Feb 25). Ideal for 1st-time buyers. Viewings highly recommended.

**e:** [peel@blackgracecowley.com](mailto:peel@blackgracecowley.com) | **w:** [blackgracecowley.com](http://blackgracecowley.com) | **t:** +44 (0) 1624 845 696

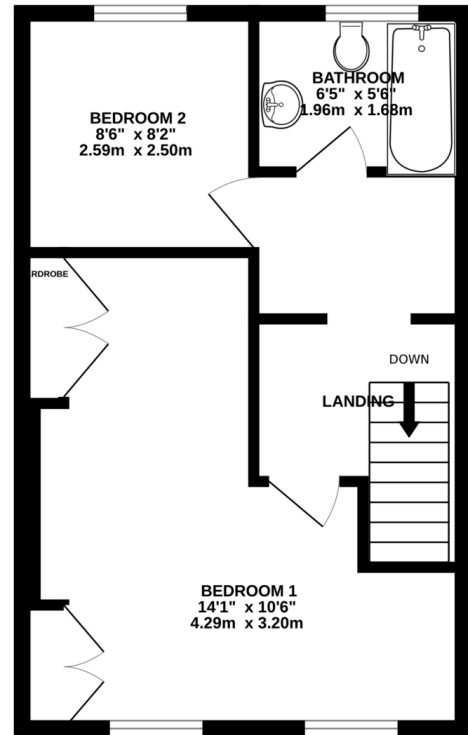
**a:** 9 Atholl Place, PEEL, Isle of Man, IM5 1HE

# FLOORPLAN

GROUND FLOOR  
397 sq.ft. (36.9 sq.m.) approx.



1ST FLOOR  
397 sq.ft. (36.9 sq.m.) approx.



TOTAL FLOOR AREA : 794 sq.ft. (73.7 sq.m.) approx.

Whilst every attempt has been made to ensure the accuracy of the floorplan contained here, measurements of doors, windows, rooms and any other items are approximate and no responsibility is taken for any error, omission or mis-statement. This plan is for illustrative purposes only and should be used as such by any prospective purchaser. The services, systems and appliances shown have not been tested and no guarantee as to their operability or efficiency can be given.  
Made with Metropix ©2026



PROPERTY DETAILS FOR  
**4 Bridge Street, Peel**

## Disclaimer

These particulars are for information purposes only and do not constitute or form any contract nor should any statement contained herein be relied upon as a representation of fact.

Neither the vendor nor Black Grace Cowley (the firm), nor any officer or employee of the firm accept liability or responsibility for any statement contained herein.

The vendor does not by these particulars, nor does the firm, nor does any officer or any employee of the firm have any authority to make or give any representation or warranty whatsoever as regards the property or otherwise. It is the sole responsibility of any person interested in the property described in these particulars to make all proper enquiries and searches to verify the description of the property and all other particulars herein.