



ASKING PRICE

£489,000

THE DETAILS

 3     2     1



1 Links Close

Peel

£489,000

call in today or visit [www.blackgracecowley.com](http://www.blackgracecowley.com) for more details

e: [peel@blackgracecowley.com](mailto:peel@blackgracecowley.com) | w: [blackgracecowley.com](http://blackgracecowley.com) | t: +44 (0) 1624 845 696

a: 9 Atholl Place, PEEL, Isle of Man, IM5 1HE

PROPERTY DETAILS FOR  
**Grenaby, 1 Links Close, Peel**



PROPERTY DETAILS FOR  
**Grenaby, 1 Links Close, Peel**



PROPERTY DETAILS FOR  
**Grenaby, 1 Links Close, Peel**



PROPERTY DETAILS FOR  
**Grenaby, 1 Links Close, Peel**



## Grenaby, 1 Links Close, Peel



## THE DESCRIPTION

- Spacious detached True Bungalow
- Located in a leafy, quiet and desirable cul-de-sac
- Lounge, Dining Room, Kitchen
- 3 Bedrooms, 1 Shower room, 1 Ensuite
- Large sunny garden
- Utility and Double Garage
- Viewings highly recommended
- No Chain

## THE PROPERTY

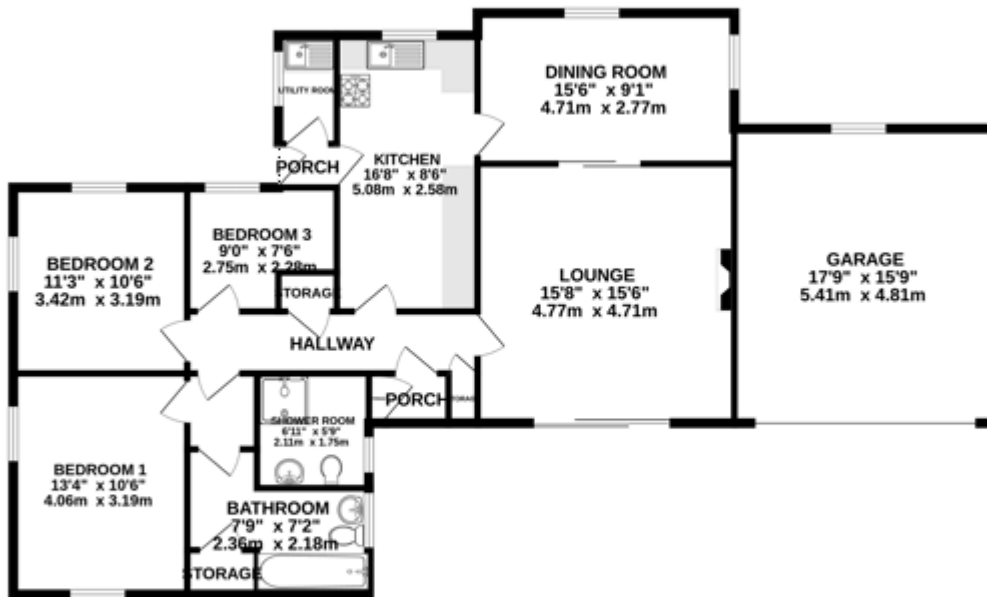
Black Grace Cowley are delighted to present 1 Links Close to the market. A rare opportunity to acquire a spacious, detached true bungalow, within a quiet and secluded cul-de-sac in Peel. The property is conveniently located within walking distance of the town centre, with its range of shops, bars, restaurants, marina, and the ever-popular promenade and beach. The bungalow offers generous and well-proportioned accommodation. Entering through the porch to a bright hallway, on the right is a sunny lounge with a uPVC sliding door onto the front patio and dining room that leads to the kitchen. Off the kitchen is the rear porch with door to the garden and utility room. There are three double bedrooms, one en-suite with bath, WC and sink and a separate shower room.

Externally, the property boasts a generous, south-facing front garden with surrounding patio and rear garden areas with mature shrubs and trees, along with a greenhouse. A double garage, is complemented by off-road parking for four to five vehicles. In need of some modernisation this delightful bungalow sits on a generous plot in a sought after location and viewings are highly recommended to appreciate it's full potential.

uPVC Double glazing. Gas central heating. No Chain.

## FLOORPLAN

GROUND FLOOR  
1388 sq.ft. (128.9 sq.m.) approx.



TOTAL FLOOR AREA : 1388 sq.ft. (128.9 sq.m.) approx.

While every attempt has been made to ensure the accuracy of the floorplan contained here, measurements of doors, windows, rooms and any other items are approximate and no responsibility is taken for any error, omission or mis-statement. This plan is for illustrative purposes only and should be used as such by any prospective purchaser. The services, systems and appliances shown have not been tested and no guarantee as to their operability or efficiency can be given.  
Made with Metropix 12025



PROPERTY DETAILS FOR

# Grenaby, 1 Links Close, Peel

## Disclaimer

These particulars are for information purposes only and do not constitute or form any contract nor should any statement contained herein be relied upon as a representation of fact.

Neither the vendor nor Black Grace Cowley (the firm), nor any officer or employee of the firm accept liability or responsibility for any statement contained herein.

The vendor does not by these particulars, nor does the firm, nor does any officer or any employee of the firm have any authority to make or give any representation or warranty whatsoever as regards the property or otherwise. It is the sole responsibility of any person interested in the property described in these particulars to make all proper enquiries and searches to verify the description of the property and all other particulars herein.

**e:** [peel@blackgracecowley.com](mailto:peel@blackgracecowley.com) | **w:** [blackgracecowley.com](http://blackgracecowley.com) | **t:** +44 (0) 1624 845 696

**a:** 9 Atholl Place, PEEL, Isle of Man, IM5 1HE