



ASKING PRICE

£495,000



THE DETAILS



3



2



3



5 Victoria Terrace

Douglas

£495,000

call in today or visit www.blackgracecowley.com for more details

e: hello@blackgracecowley.com | w: blackgracecowley.com | t: +44 (0) 1624 645555

a: 51 Victoria Street, DOUGLAS, Isle of Man, IM1 2LD

PROPERTY DETAILS FOR
5 Victoria Terrace, Douglas



PROPERTY DETAILS FOR
5 Victoria Terrace, Douglas



PROPERTY DETAILS FOR
5 Victoria Terrace, Douglas



PROPERTY DETAILS FOR
5 Victoria Terrace, Douglas



PROPERTY DETAILS FOR
5 Victoria Terrace, Douglas



PROPERTY DETAILS FOR
5 Victoria Terrace, Douglas



PROPERTY DETAILS FOR
5 Victoria Terrace, Douglas



PROPERTY DETAILS FOR
5 Victoria Terrace, Douglas



THE DESCRIPTION

- Beautifully restored and extended period townhouse
- Sought-after central Douglas location
- Within walking distance of excellent schools, the Promenade and town centre
- Sympathetically renovated, blending period character with modern family living
- MVHR (Mechanical Ventilation with Heat Recovery) system
- Stunning open-plan kitchen/dining room with garden snug
- Three bedrooms, two bathrooms and three versatile reception rooms
- Luxury family bathroom with underfloor heating
- Replacement timber sliding sash double glazed windows (2024)
- Reclaimed original French parquet flooring
- Wealth of original features including fireplaces and tiled entrance porch
- Useful attic store/hobby room
- South-facing rear garden with private sun terrace and vegetable patch
- Potential for off-road parking or garage/carport
- Gas fired central heating

THE PROPERTY

Black Grace Cowley are delighted to present 5 Victoria Terrace, Douglas, a beautifully restored and thoughtfully extended period townhouse, sympathetically renovated to combine timeless period character with modern family living. Ideally situated in a sought-after central location, the property is within walking distance of excellent schools, Douglas Promenade and the town centre.

Beautifully blending original features with contemporary finishes, the property retains an abundance of character including feature fireplaces and an attractive tiled entrance porch, whilst benefitting from high-quality modern upgrades throughout. The spacious and flexible accommodation comprises three bedrooms, two bathrooms, three reception rooms and a useful attic store/hobby room, making it ideal for modern family living or those working from home.

To the rear, the heart of the home is the impressive open-plan kitchen/dining room, featuring reclaimed original French parquet flooring and opening into a cosy garden snug. Replacement timber sliding sash double glazed windows, installed in 2024, flood the space with natural light whilst providing direct access onto the private south-facing terrace and beautifully maintained rear garden. The property also benefits from an MVHR (Mechanical Ventilation with Heat Recovery) system, enhancing comfort, ventilation and energy efficiency throughout the home.



PROPERTY DETAILS FOR

5 Victoria Terrace, Douglas

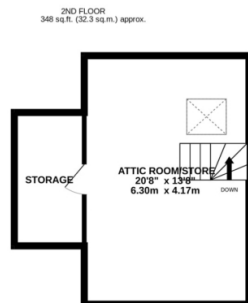
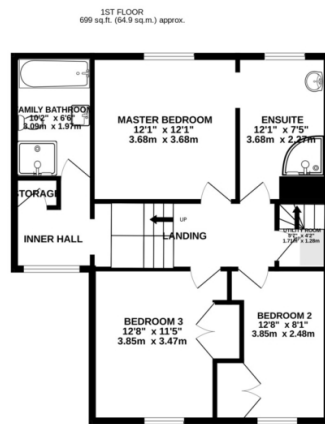
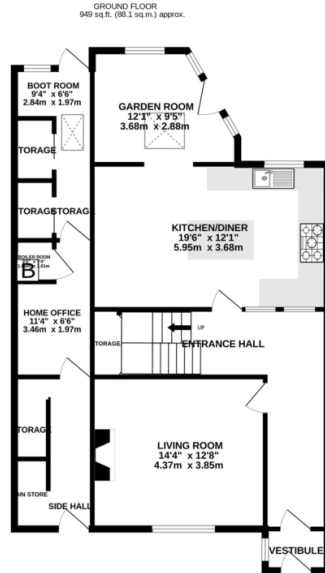
Externally, the property enjoys a private south-facing garden with a lawn, vegetable patch and rear hardstanding offering excellent potential for off-road parking or the construction of a detached garage or carport. Further benefits include gas fired central heating and a luxurious family bathroom with underfloor heating.

Early viewing is highly recommended through Black Grace Cowley.

e: hello@blackgracecowley.com | **w:** blackgracecowley.com | **t:** +44 (0) 1624 645555

a: 51 Victoria Street, DOUGLAS, Isle of Man, IM1 2LD

FLOORPLAN



TOTAL FLOOR AREA : 1995 sq.ft. (185.3 sq.m.) approx.

Whilst every attempt has been made to ensure the accuracy of the floorplan contained here, measurements of doors, windows, rooms and any other items are approximate and no responsibility is taken for any error, omission or mis-statement. This plan is for illustrative purposes only and should be used as such by any prospective purchaser. The services, systems and appliances shown have not been tested and no guarantee as to their operability or efficiency can be given.
Made with Metropix ©2025



PROPERTY DETAILS FOR

5 Victoria Terrace, Douglas

Disclaimer

These particulars are for information purposes only and do not constitute or form any contract nor should any statement contained herein be relied upon as a representation of fact.

Neither the vendor nor Black Grace Cowley (the firm), nor any officer or employee of the firm accept liability or responsibility for any statement contained herein.

The vendor does not by these particulars, nor does the firm, nor does any officer or any employee of the firm have any authority to make or give any representation or warranty whatsoever as regards the property or otherwise. It is the sole responsibility of any person interested in the property described in these particulars to make all proper enquiries and searches to verify the description of the property and all other particulars herein.

e: hello@blackgracecowley.com | **w:** blackgracecowley.com | **t:** +44 (0) 1624 645555

a: 51 Victoria Street, DOUGLAS, Isle of Man, IM1 2LD